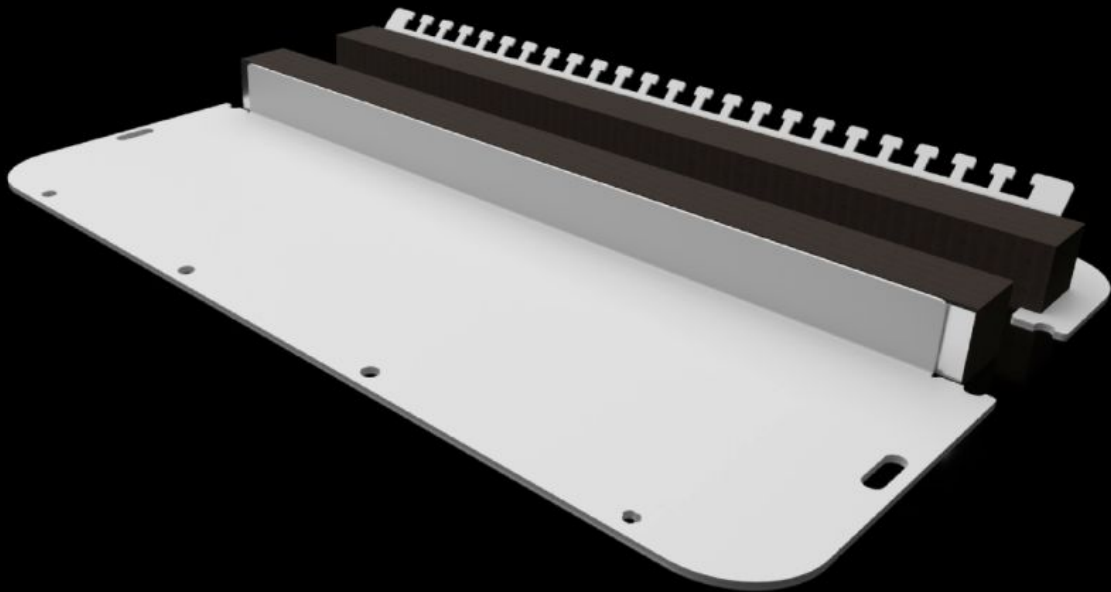


Rittal – The System.

Faster – better – everywhere.



SZ 2567.450

Flange plate in two parts with elastic clamping profile

State: 2026-06-16 (Source: [rittal.com/ca-en](https://www.rittal.com/ca-en))

ENCLOSURES

POWER DISTRIBUTION

CLIMATE CONTROL

IT INFRASTRUCTURE

SOFTWARE & SERVICES

FRIEDHELM LOH GROUP



SZ 2567.450 - Flange plate in two parts with elastic clamping profile for AX

The split flange plate allows easy mounting on the housing and offers various installation options. For easy insertion of cables with or without plug connections into the housing. The special holes in the flange plate ensure automatic equipotential bonding when screwed together. Bolts, clamps or grounding cables are no longer necessary.

Features

Model No.	SZ 2567.450
Version	Two-piece
Material	Carbon steel
Color	RAL 7035
Supply includes	Assembly components
Note	The assignment of the flange plate size can be found on the respective housings When installing in enclosure width >760 mm, 2 PUs are required
Dimensions	Width: 436 mm Depth: 221 mm
Suitable for	Enclosure type: AX
Suitable for Model No.	1260.000 1339.000 1360.000 1376.000 1059.000 1091.000 1116.000 1261.000
Gland plate	Size: 7
Packaging unit	1 pc(s).
Net weight	1.4 kg
Gross weight	1.46 kg

Features

PCF/VE (cradle-to-gate)	5.6 kg CO2 eq (Cat B)
Information regarding the PCF class	Category B: PCF value (cradle-to-gate) calculated approximately on the basis of the product weight and self-declared
Customs tariff number	73079100
ETIM 9	EC000211
ETIM 8	EC000211
ECLASS 8.0	27142421
Product description	SZ metal flange plate in two parts, for AX, with elastic clamping profile, WD: 436x221 mm, for flange plates size 7