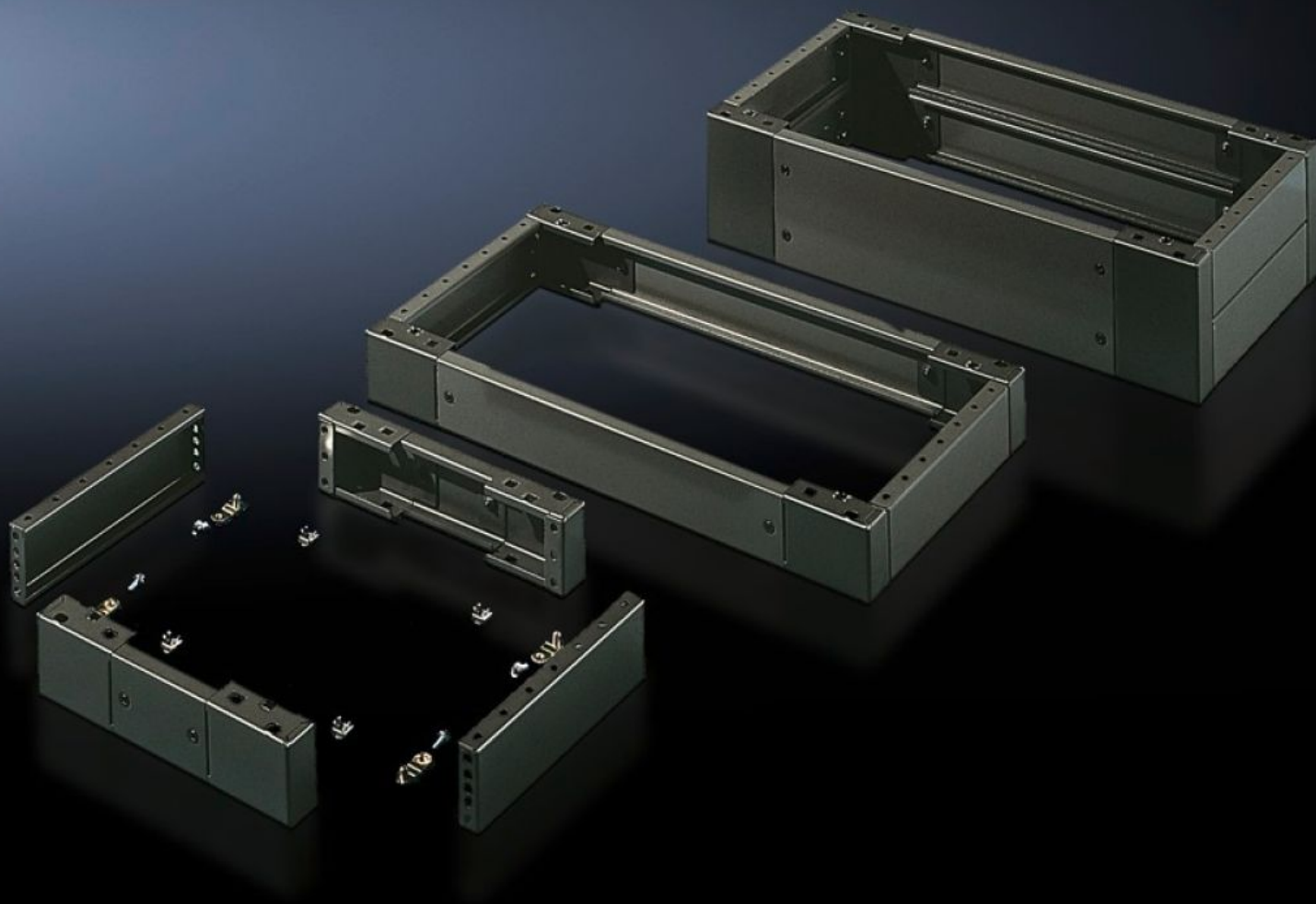


# Rittal – The System.

Faster – better – everywhere.



## SO 2807.200 Base/Plinth, Complete

State: 2025-07-05 (Source: [rittal.com/ca-en](https://rittal.com/ca-en))

ENCLOSURES

POWER DISTRIBUTION

CLIMATE CONTROL

IT INFRASTRUCTURE

SOFTWARE & SERVICES

FRIEDHELM LOH GROUP



# SO 2807.200 - Base/Plinth, Complete Carbon steel, for AE, TP universal consoles

Trim panels at the front and rear with fitted corner pieces and side trim panels.

## Features

Model No.	SO 2807.200
Product description	Trim panels at the front and rear with fitted corner pieces and side trim panels.
Material	Carbon steel
Surface finish	Spray-finished
Color	RAL 7022
Supply includes	4 corner pieces 2 trim panels front/rear 2 trim panels, side Assembly components for mounting on the enclosure 2 trim panels front/rear 2 trim panels, side, each 100 mm
Dimensions	Height: 100 mm Depth: 450 mm
Suitable for	Enclosure type: TP universal console Width: = 600 mm Depth: = 500 mm
Packaging unit	1 pc(s).
Net weight	5.98
Gross weight	6.14
Customs tariff number	94039910
EAN	4028177032651
ETIM 9	EC000721
ETIM 8	EC000721

# Features

ECLASS 8.0

27182003