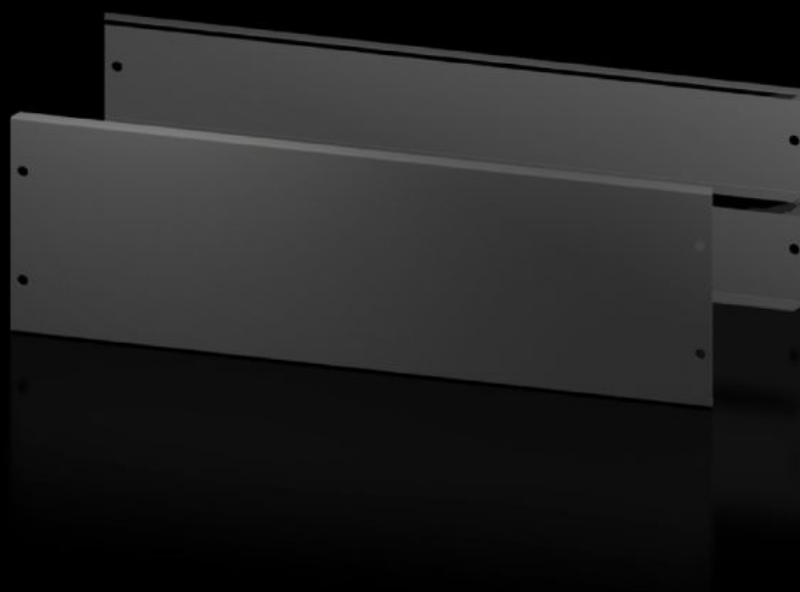


# Rittal – The System.

Faster – better – everywhere.



## AX 2830.082

## Base/plinth panels, front and rear

State: 2025-08-19 (Source: [rittal.com/ca-en](https://rittal.com/ca-en))

ENCLOSURES

POWER DISTRIBUTION

CLIMATE CONTROL

IT INFRASTRUCTURE

SOFTWARE & SERVICES

FRIEDHELM LOH GROUP



# AX 2830.082 - Base/plinth panels, front and rear for AX

The base/plinth panels at the front and rear offer a large opening for optimal access to the screw-fastening point and simple cable routing.



## Features

Model No.	AX 2830.082
Version	new version/design
Material	Base/plinth trim panels, front/rear: Carbon steel
Color	RAL 9005
Supply includes	2 x base/plinth trim panels, front/rear
Note	Base/plinth elements are required on the sides to finish off a base/plinth unit The components of the first generation base/plinth system cannot be combined with the components of the second generation base/plinth system
Dimensions	Height: 200 mm
Suitable for	Enclosure type: AX Width: = 800 mm
Packaging unit	2 pc(s).
Net weight	3.6
Gross weight	3.746
Customs tariff number	94039910
EAN	4028177037458
ETIM 9	EC000721

# Features

ETIM 8	EC000721
ECLASS 8.0	27182003

# Approvals

Approvals	UL + C-UL - FTTA
-----------	------------------