

# Rittal – The System.

Faster – better – everywhere.



## AX 2830.420

## Base/plinth elements, lateral

State: 2025-12-16 (Source: [rittal.com/ca-en](https://www.rittal.com/ca-en))

ENCLOSURES

POWER DISTRIBUTION

CLIMATE CONTROL

IT INFRASTRUCTURE

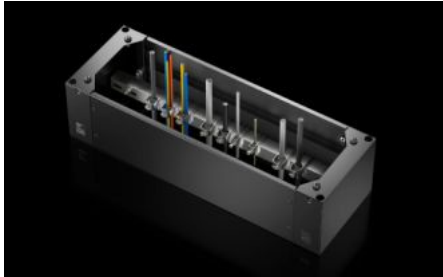
SOFTWARE & SERVICES

FRIEDHELM LOH GROUP



# AX 2830.420 - Base/plinth elements, lateral for AX

Base/plinth element for attaching in the depth and for stabilizing the base/plinth.



## Features

Model No.	AX 2830.420
Version	new version/design
Material	Base/plinth components: Carbon steel Cover caps: Plastic
Color	RAL 9005
Supply includes	2 base/plinth components 2 cover caps Assembly components
Note	The components of the first generation base/plinth system cannot be combined with the components of the second generation base/plinth system
Dimensions	Height: 200 mm
Suitable for	Enclosure type: AX Depth: = 400 mm
Packaging unit	2 pc(s).
Net weight	3.9
Gross weight	3.945
Customs tariff number	94039910
EAN	4028177037687
ETIM 9	EC000721

# Features

ETIM 8	EC000721
ECLASS 8.0	27182003

# Approvals

Approvals	UL + C-UL - FTTA
-----------	------------------