

Rittal – The System.

Faster – better – everywhere.



SK 3237.710 Blue e+ filter fan

State: 2026-02-08 (Source: [rittal.com/ca-en](https://www.rittal.com/ca-en))

ENCLOSURES

POWER DISTRIBUTION

CLIMATE CONTROL

IT INFRASTRUCTURE

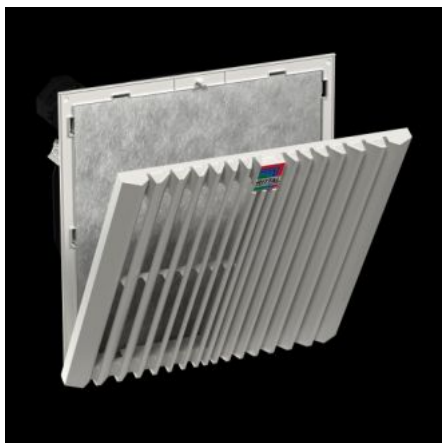
SOFTWARE & SERVICES

FRIEDHELM LOH GROUP



SK 3237.710 - Blue e+ filter fan

Complete fan unit for tool-free mounting on surfaces. Air throughput from 11 - 682.75 cfm, protection category IP 54 as standard.



Features

Model No.	SK 3237.710
Version	wall-mounted
Product description	Filter fans with diagonal fan technology are more pressure-resistant and produce more constant air performance. The diagonal outflow direction ensures a more uniform heat dissipation from the enclosure.
Benefits	Easy filter change thanks to a new opening mechanism on the louvre grille Faster assembly on the enclosure due to optimized snap hooks Diagonal fan technology ensures more uniform and consistent ventilation of the control cabinet through higher pressure stability. Tool-free mounting
Material	Plastic
Color	RAL 7035
Supply includes	Complete unit ready to install, including chopped fiber filter mat
Fan	Axial, shaded pole motor
Unimpeded air flow (with chopped fiber filter)	At 50 Hz: 20 m³/h At 60 Hz: 25 m³/h

Features

Airflow with corresponding outlet filter including chopped fiber filter	At 50 Hz: 15 m³/h At 60 Hz: 18 m³/h
Rated operating voltage	115 V, 1~, 50 Hz/60 Hz
Rated power Pel	At 50 Hz: 12 W At 60 Hz: 10 W
Rated current max.	At 50 Hz: 0.14 A At 60 Hz: 0.13 A
Dimensions	Width: 116.5 mm Height: 116.5 mm Depth: 64.5 mm
Installation depth	46 mm
Mounting cut-out	Width of opening: 92 mm Cut-out height: 92 mm
Protection category IP to IEC 60 529	IP 54 with fleece filter IP 56 with fleece filter and hose-proof hood
Protection category NEMA	Type 12 with fleece filter Type 3, 3R with fleece filter and hose-proof hood
Pre-fuse	Miniature circuit-breaker/fuse: 2 A
Note	For the 3237.XXX filter fan, the electrical connection is made via 2 individual wires (length approx. 300 mm) on the unit, for all other filter fans, it's made via a spring-loaded terminal
Operating temperature range	-15 °C...55 °C
Storage temperature range	-30 °C...70 °C
Noise pressure level	At 50 Hz: 42 dB(A) At 60 Hz: 47 dB(A)
Packaging unit	1 pc(s).
Net weight	0.464
Gross weight	0.466
Customs tariff number	84145915
EAN	4028177998292
ETIM 9	EC000320

Features

ETIM 8	EC000320
ECLASS 8.0	27180716

Approvals

Approvals	CSA 30 - KC Korea UL + C-UL - FTTA UR + C-UR (recognized)
Explanations	Declaration of conformity