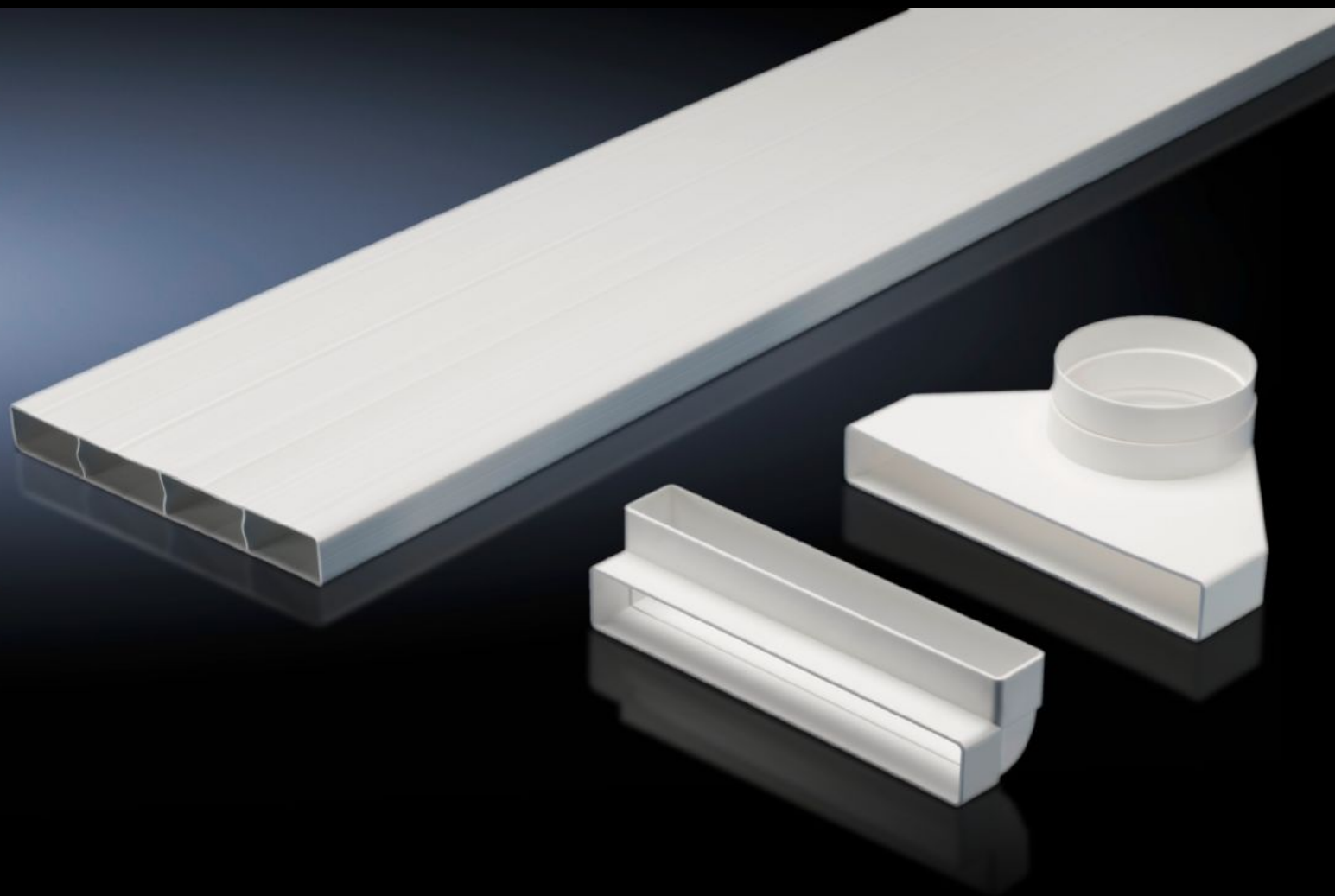


**Rittal – The System.**

Faster – better – everywhere.



# SK 3286.850

## Shallow air duct system

State: 2025-12-06 (Source: [rittal.com/ca-en](https://www.rittal.com/ca-en))

ENCLOSURES

POWER DISTRIBUTION

CLIMATE CONTROL

IT INFRASTRUCTURE

SOFTWARE & SERVICES

FRIEDHELM LOH GROUP



# SK 3286.850 - Shallow air duct system for roof-mounted cooling units and roof-mounted air-water heat exchangers

Cold air can be routed directly to specific areas of the enclosure using the air duct system. This eliminates the risk of air short circuits due to self-ventilated installed devices. The shallow ducts can be cut to the desired length.

## Features

Model No.	SK 3286.850
Product description	Cold air can be routed directly to specific areas of the enclosure using the air duct system. This eliminates the risk of air short circuits due to self-ventilated installed devices. The dimensions of the shallow duct are W x H x D 229 x 1500 x 29 mm, and can be shortened to the required length.
Applications	Suitable for enclosures with widths of 800 mm or more and depths of 600 mm or more.
Material	Flame-resistant plastic to DIN 4102/B1
Color	RAL 7035
Supply includes	Flat duct Adaptor Compensating piece Deflector, 90°
Mounting tip	The air duct adapter 3286.840 is required for installation with devices 3359.XXX and 3382.XXX.
Note	Do not direct cold air straight at active components. When using the ducting system, the performance of the cooling unit may be reduced, depending on the application in question. Cannot be used in conjunction with quick-change frames.

# Features

Suitable for Model No.	3209....
	3210....
	3273....
	3383....
	3384....
	3385....
	3359....
	3382....
Packaging unit	1 pc(s).
Net weight	2.3
Gross weight	2.46
Customs tariff number	39269097
EAN	4028177557055
ETIM 9	EC011217
ETIM 8	EC011217
ECLASS 8.0	22410601

# Approvals

Certificates	EAC
--------------	-----