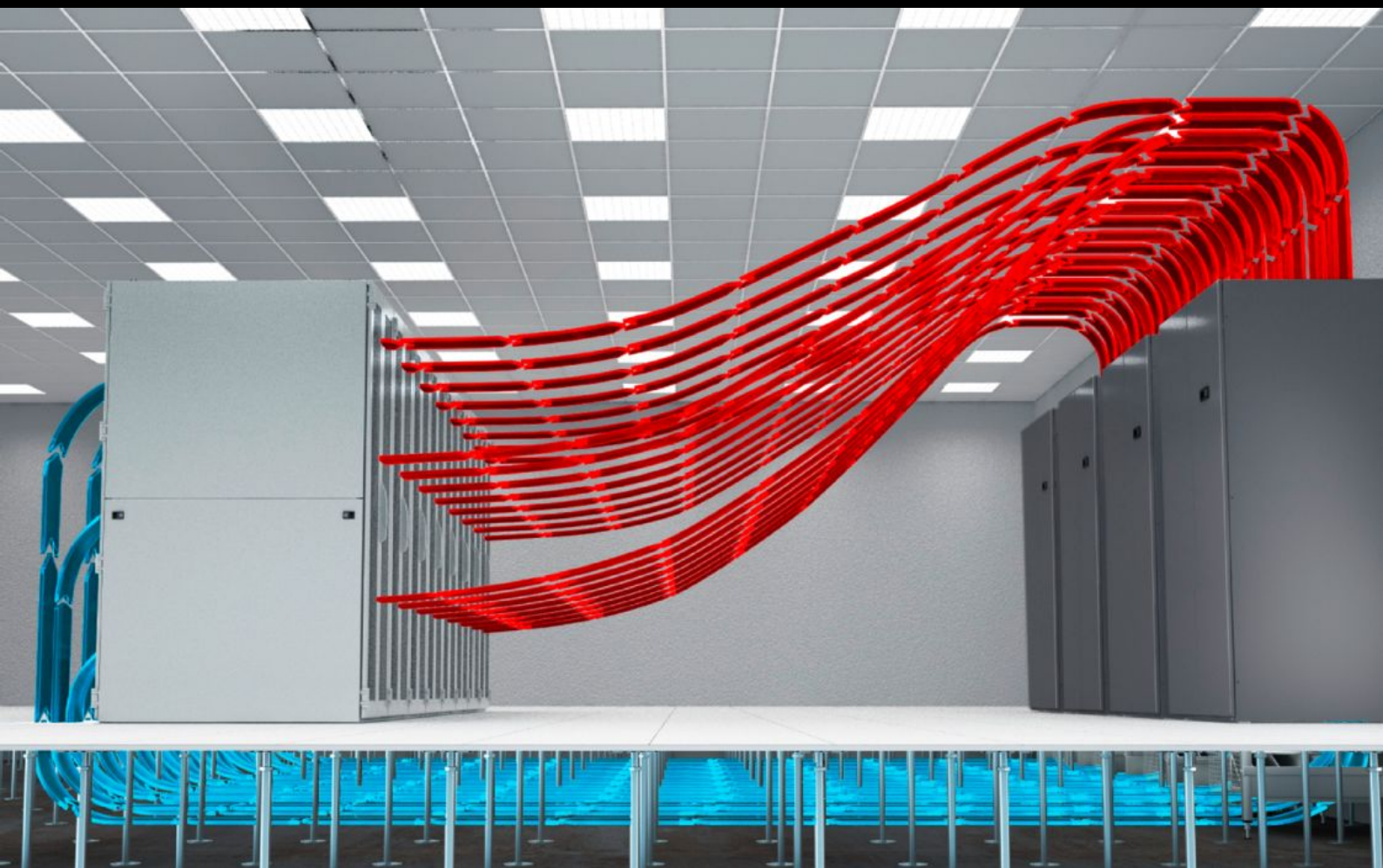
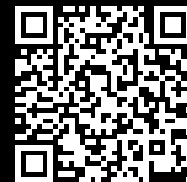


Rittal – The System.

Faster – better – everywhere.



SK 3300.599 IT room cooling

State: 2026-02-08 (Source: [rittal.com/ca-en](https://www.rittal.com/ca-en))

ENCLOSURES

POWER DISTRIBUTION

CLIMATE CONTROL

IT INFRASTRUCTURE

SOFTWARE & SERVICES

FRIEDHELM LOH GROUP



SK 3300.599 - IT room cooling CRAH Units CW / CRAC Units DX

Reliable and energy-efficient room cooling for data centers with the highest level of precision and reliability. CyberAir 3PRO CW, CyberAir 3PRO DX and CyberAir Mini CW room cooling systems from the Stulz portfolio.

Features

Model No.	SK 3300.599
Benefits	<div>Highest savings potential with indirect dynamic free cooling or direct free cooling</div> <div>Low noise emissions thanks to optimized unit design and EC fans</div> <div>Enormous energy savings thanks to EC technology and the largest possible heat exchanger and filter surfaces</div> <div>Maximum cooling capacity on a minimal footprint</div> <div>Highly efficient airflow (Airflow Efficiency Ratio)</div> <div>Available with integrated and external fan unit (DX)</div> <div>5 cooling systems, 6 sizes, different air ducts, different heat exchangers (DX)</div> <div>Cold water climate control system with integrated and external fan unit available (CW)</div> <div>2 cooling systems (CW, CW2), 11 sizes, different air ducts, different heat exchangers (CW)</div>

Features

Version	<p>"CyberAir Mini" is an energy-efficient and sound-optimized range of units for small to medium heat loads. The modern and easy-to-maintain units require very little floor space and can be easily installed in existing rooms due to their compact dimensions. Total cooling capacity (kW): 9 - 35</p> <p>The "CyberAir 3PRO CW" controls the climate in the data center with maximum precision, reliability and energy efficiency. Thanks to STULZ's technological leadership, maximum potential savings are achieved with maximum reliability at the same time. As diverse as data centers are, the CyberAir 3PRO CW cold water climate control unit is flexible and tailor-made. Versions of the precision climate control enclosure are offered in 11 sizes with different air ducts. Total cold water climate control unit power (kW): 22 - 260</p> <p>The "CyberAir 3PRO DX" is a logical further development of the extremely successful CyberAir 3 series. The room climate control system incorporates more than three decades of global project experience. To achieve maximum cooling capacity with a minimum footprint, while providing the highest potential savings for you, recirculating climate control systems offer greater adaptability than any other precision climate control unit on the market. Refrigerants: R410A (GWP: 2,088); R407C (GWP: 1,774); R134a (GWP: 1,430). Total cooling capacity (kW): 22 - 150</p>
Note	The CW or DX room cooling units are designed and offered on a project-specific basis
Packaging unit	1 pc(s).
Customs tariff number	84186900
EAN	4028177963948
ETIM 9	EC002515