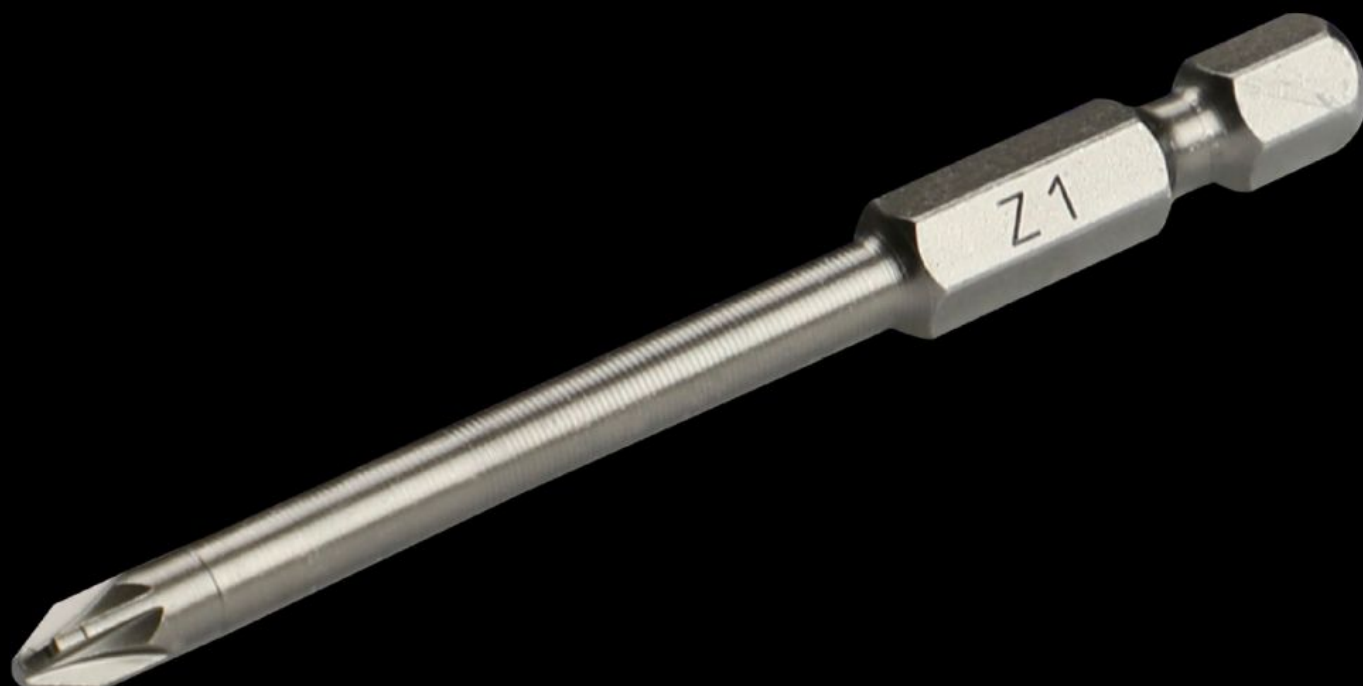


Rittal – The System.

Faster – better – everywhere.



AS 4053.031

**Industrial bit for cordless
screwdriver**

State: 2025-12-16 (Source: rittal.com/ca-en)

ENCLOSURES

POWER DISTRIBUTION

CLIMATE CONTROL

IT INFRASTRUCTURE

SOFTWARE & SERVICES

FRIEDHELM LOH GROUP



AS 4053.031 - Industrial bit for cordless screwdriver With long shaft

Precisely manufactured screwdriver with long shaft for industrial use.

Features

Model No.	AS 4053.031
Version	For positive/negative
Product description	Precisely manufactured screwdriver with long shaft for industrial use.
Benefits	Maximum hardness and torque values
Technical specifications	Tool adaptation E 6.3 (¼")
Material	High-grade special tool steel
Blade dia.	6.3 mm
Output	Gear wheel 1
Length	73 mm
Packaging unit	3 pc(s).
Net weight	0.03
Gross weight	0.037
Customs tariff number	82079030
EAN	4028177807440
ETIM 9	EC002118
ETIM 8	EC003864
ECLASS 8.0	21044204