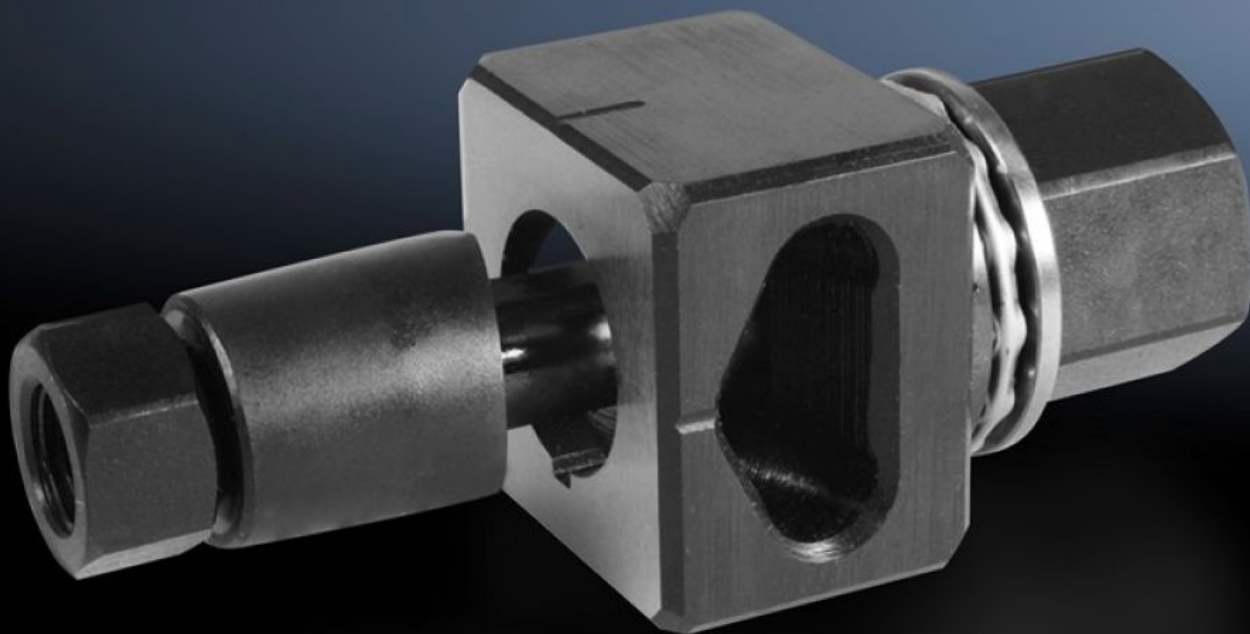


**Rittal – The System.**

Faster – better – everywhere.



**AS 4055.440**

**Hole punch, special contour**

State: 2025-08-11 (Source: [rittal.com/ca-en](https://www.rittal.com/ca-en))

ENCLOSURES

POWER DISTRIBUTION

CLIMATE CONTROL

IT INFRASTRUCTURE

SOFTWARE & SERVICES

FRIEDHELM LOH GROUP



# AS 4055.440 - Hole punch, special contour for carbon steel

For punching cut-outs with a special shape

## Features

Model No.	AS 4055.440
Version	With 3 mm lug
Product description	For punching cut-outs with a special shape. The hole punch is operated with a wrench or hydraulic punch.
Benefits	With side chute for waste No jamming of die
Supply includes	Die Stamp Tension bolts Lock nut Thrust nut with ball bearing Adapter for hydraulics Plastic case
Workable material	Carbon steel
Max. material thickness that can be machined for sheet steel	2 mm
Ø hole punch	22.5 mm
Packaging unit	1 pc(s).
Net weight	0.727
Gross weight	0.757
Customs tariff number	82073010
EAN	4028177808492
ETIM 9	EC000156
ETIM 8	EC000156

# Features

---

ECLASS 8.0

21049047