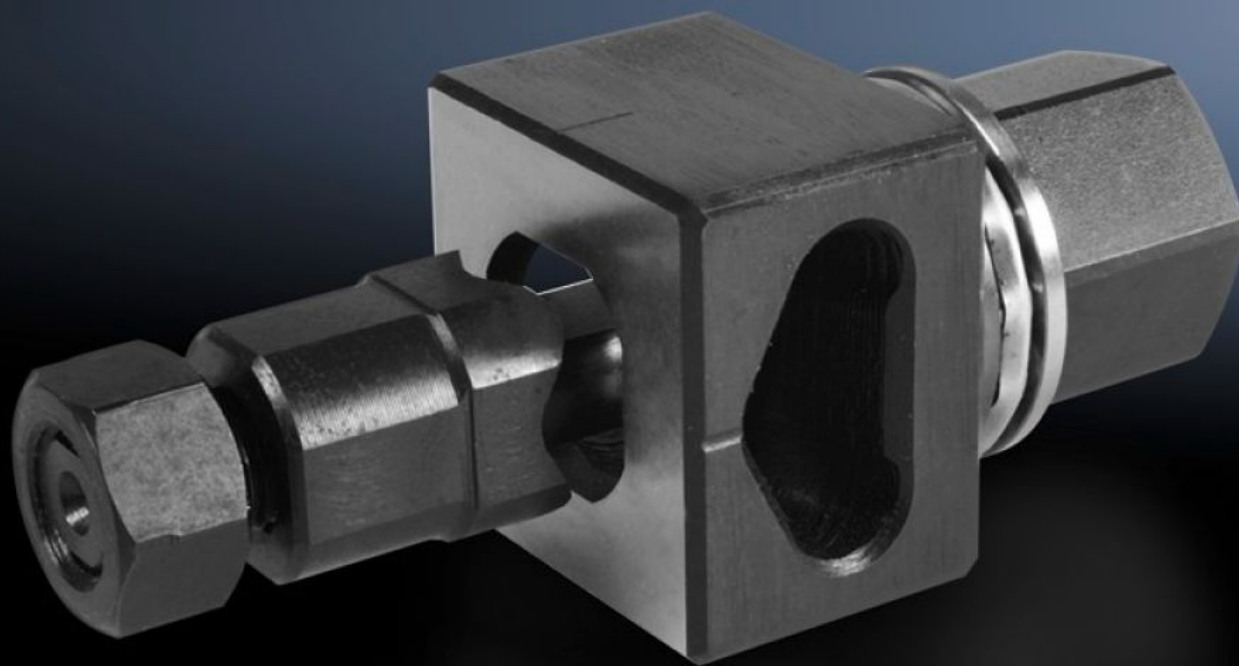


**Rittal – The System.**

Faster – better – everywhere.



**AS 4055.441**

**Hole punch, special contour**

State: 2025-07-20 (Source: [rittal.com/ca-en](https://www.rittal.com/ca-en))

ENCLOSURES

POWER DISTRIBUTION

CLIMATE CONTROL

IT INFRASTRUCTURE

SOFTWARE & SERVICES

FRIEDHELM LOH GROUP



# AS 4055.441 - Hole punch, special contour for carbon steel

For punching cut-outs with a special shape

## Features

|  |   |
|--|---|
| Model No.  | AS 4055.441   |
| Version  | Flattened to 20.1 mm on 4 sides   |
| Product description  | For punching cut-outs with a special shape. The hole punch is operated with a wrench or hydraulic punch.            |
| Benefits   | With side chute for waste<br>No jamming of die  |
| Supply includes  | Die<br>Stamp<br>Tension bolts<br>Lock nut<br>Thrust nut with ball bearing<br>Adapter for hydraulics<br>Plastic case |
| Workable material  | Carbon steel  |
| Max. material thickness that can be machined for sheet steel | 2 mm  |
| Ø hole punch   | 22.5 mm   |
| Packaging unit   | 1 pc(s).  |
| Net weight   | 0.723   |
| Gross weight   | 0.753   |
| Customs tariff number  | 82073010  |
| EAN  | 4028177808508   |
| ETIM 9   | EC000156  |
| ETIM 8   | EC000156  |

# Features

---

ECLASS 8.0

21049047