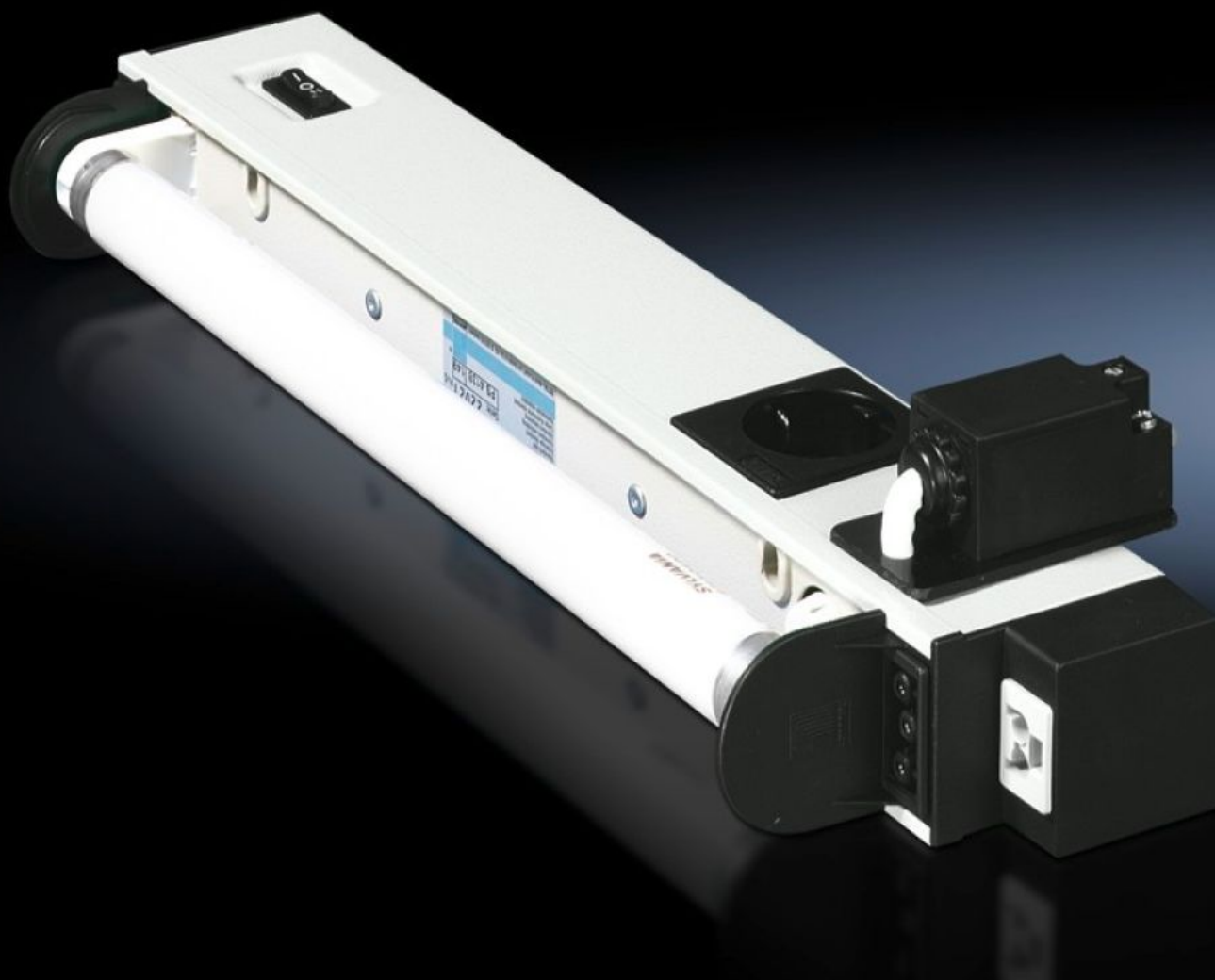
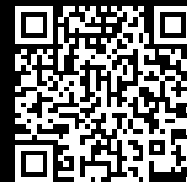


Rittal – The System.

Faster – better – everywhere.



SZ 4138.150 Standard light

State: 2025-08-23 (Source: [rittal.com/ca-en](https://www.rittal.com/ca-en))

ENCLOSURES

POWER DISTRIBUTION

CLIMATE CONTROL

IT INFRASTRUCTURE

SOFTWARE & SERVICES

FRIEDHELM LOH GROUP



SZ 4138.150 - Standard light

Supply voltage: 120 V AC 60 Hz, 230 V AC 50 Hz

Features

Model No.	SZ 4138.150
Version	with door-operated switch
Supply includes	Standard light Light (bulb) Assembly components Integral door-operated switch
Rated power	14 W
Ballast	Magnetic ballast
Connection options	Power supply through connector Through-wiring (configuration of row of luminaires)
Integral door-operated switch	Yes
Light (bulb)	Fluorescent lamp, G13 backplate
Protection category	I (PE conductor)
Switch (type)	Integrated, on/off/door-operated switch
Light – installation type	Screw fastening
Rated impulse withstand voltage, phase to earth	1500 V AC
Rated impulse withstand voltage, phase to phase	500 V AC
Rated insulation voltage	500 V DC/1s
Installation options	TS horizontal profile from roof frames: direct TS, SE vertical section: with TS adapter bracket SE sections on front and rear of roof frame: with TS adapter bracket SE profiles to the side of roof frames: direct

Features

Dimensions	Width: 452 mm Height: 117 mm Depth: 50 mm
Operating temperature range	-15 °C...45 °C
Outlets	D, ground contact (type F, CEE 7/4)
Storage temperature range	-20 °C...70 °C
Rated operating voltage	230 V, 1~, 50 Hz
Socket version	D, ground contact (type F, CEE 7/4)
Packaging unit	1 pc(s).
Net weight	1.5
Gross weight	1.619
Customs tariff number	94054990
EAN	4028177320710
ECLASS 8.0	27189241

Approvals

Explanations	Declaration of conformity Declaration of conformity UK
--------------	---