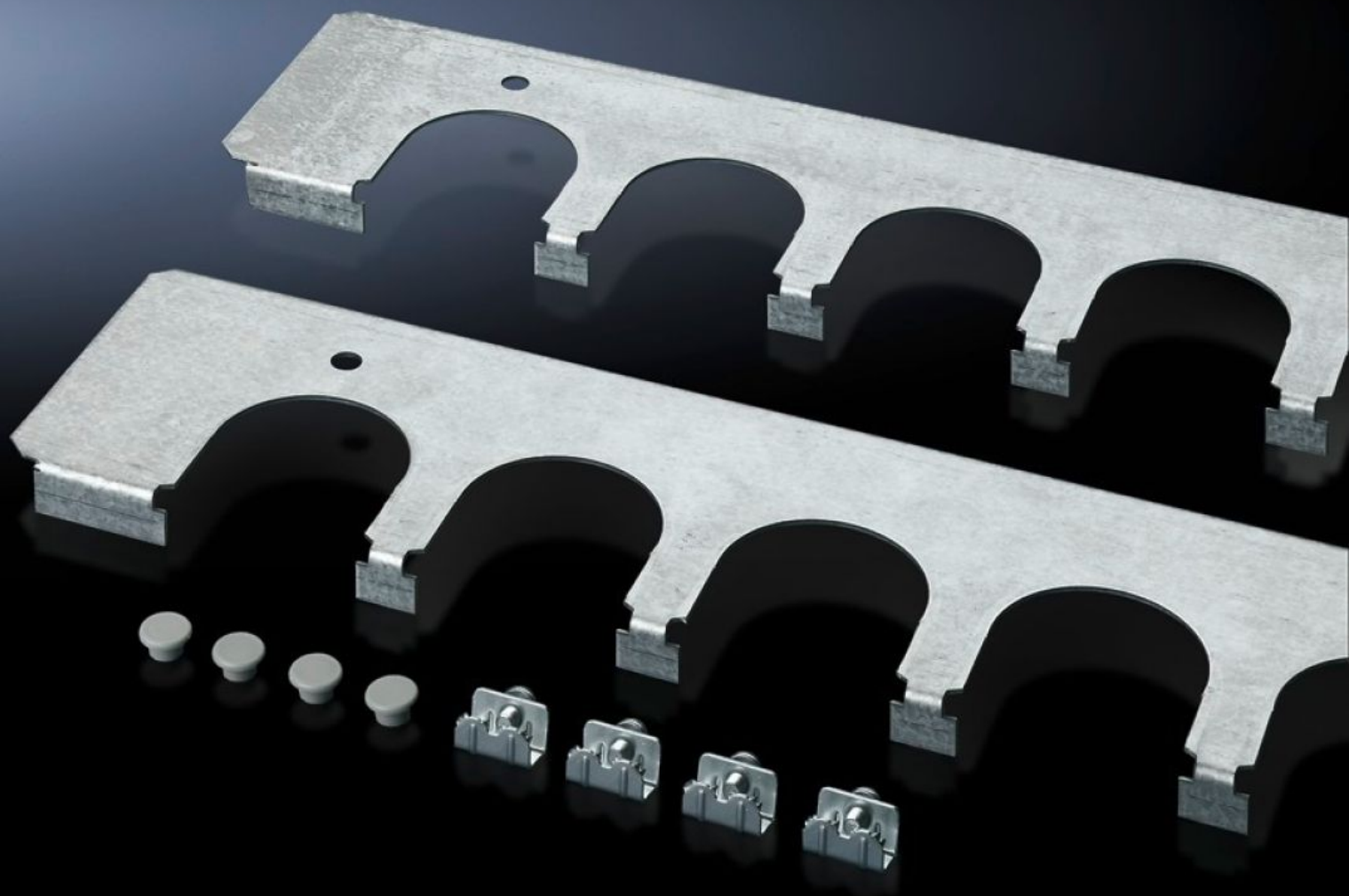


Rittal – The System.

Faster – better – everywhere.



SZ 4321.700 Cable entry plates

State: 2025-07-14 (Source: [rittal.com/ca-en](https://www.rittal.com/ca-en))

ENCLOSURES

POWER DISTRIBUTION

CLIMATE CONTROL

IT INFRASTRUCTURE

SOFTWARE & SERVICES

FRIEDHELM LOH GROUP



SZ 4321.700 - Cable entry plates for installation in TP universal consoles

Secure cable entry in combination with cable grommets and connector grommets. Installed instead of the standard base plates.

Features

Model No.	SZ 4321.700
Product description	Secure cable entry in combination with cable grommets and connector grommets. Installed instead of the standard base plates.
Material	Carbon steel
Surface finish	Zinc-plated
Supply includes	Incl. compensating plate Assembly components Incl. compensating plate
Note on Model No.:	Incl. compensating plate
Suitable for	Enclosure type: TP universal console: = 800 mm
Packaging unit	2 pc(s).
Net weight	1.194
Gross weight	1.393
Customs tariff number	73269098
EAN	4028177098824
ECLASS 8.0	27189261