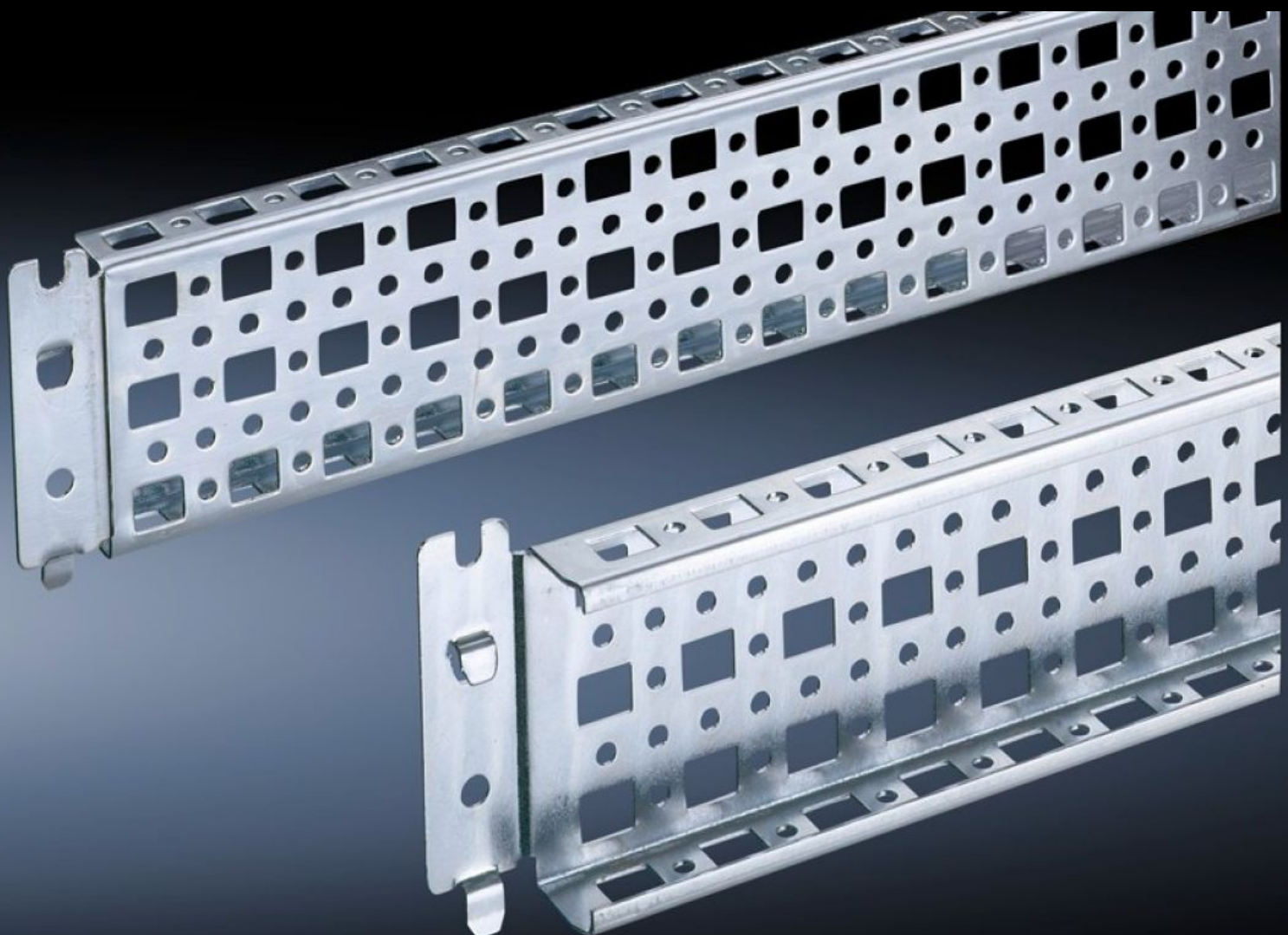


Rittal – The System.

Faster – better – everywhere.



SZ 4373.000

PS System Chassis 23 x 73 mm

State: 2025-07-20 (Source: [rittal.com/ca-en](https://www.rittal.com/ca-en))

ENCLOSURES

POWER DISTRIBUTION

CLIMATE CONTROL

IT INFRASTRUCTURE

SOFTWARE & SERVICES

FRIEDHELM LOH GROUP



SZ 4373.000 - PS System Chassis 23 x 73 mm for TS, VX SE

Mounted directly on horizontal TS enclosure profiles. Can only be mounted on vertical TS enclosure profiles using an adapter. Simply locate into the TS punchings and secure.



Features

Model No.	SZ 4373.000
Product description	Variable, with 5 rows of holes for universal skeleton structures or partial assembly. Simply locate into the system punchings and secure.
Material	Carbon steel
Surface finish	Zinc-plated
Supply includes	Assembly screws
Installation options	On the vertical TS, VX SE enclosure section via adapter rail for VX compatibility On the horizontal TS enclosure section On the horizontal VX SE enclosure section, bottom On the horizontal VX SE enclosure section, top, in the width
Suitable for	Enclosure type: TS VX SE Suitable for width/depth: 1,000 mm
Packaging unit	4 pc(s).
Net weight	4.152
Gross weight	4.35

Features

Customs tariff number	73269098
EAN	4028177099937
ETIM 9	EC002625
ETIM 8	EC002625
ECLASS 8.0	27189234