

# Rittal – The System.

Faster – better – everywhere.



## TS 4394.000

## Support rail 75 x 20 mm

State: 2026-05-22 (Source: [rittal.com/ca-en](https://www.rittal.com/ca-en))

ENCLOSURES

POWER DISTRIBUTION

CLIMATE CONTROL

IT INFRASTRUCTURE

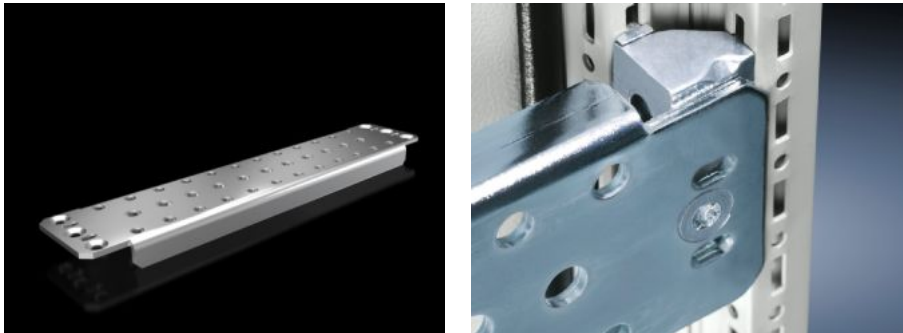
SOFTWARE & SERVICES

FRIEDHELM LOH GROUP



# TS 4394.000 - Support rail 75 x 20 mm for VX, TS, VX SE

For heavy equipment such as base isolators or transformers.



## Features

Model No.	TS 4394.000
Version	Slotted
Product description	For heavy equipment such as base isolators or transformers.
Material	Carbon steel
Surface finish	Zinc-plated
Supply includes	Assembly components
Installation options	On the inner mounting level, on VX enclosure profile On the vertical TS enclosure section via snap-on nuts 8800.806 or via adapter rail for VX compatibility, offset in the height, via TS punched rail 25 x 38 mm On the horizontal TS enclosure section: in the width, in the depth On the horizontal VX SE enclosure section in the width at the bottom and top, or in the depth at the bottom and top using snap-on nut 8800.808
Suitable for	Enclosure type: VX TS VX SE Width: = 400 mm Depth: = 400 mm
Packaging unit	4 pc(s).
Net weight	3.928 kg

# Features

---

Gross weight	4.127 kg
PCF/VE (cradle-to-gate)	20.11 kg CO2 eq (Cat B)
Information regarding the PCF class	Category B: PCF value (cradle-to-gate) calculated approximately on the basis of the product weight and self-declared
Customs tariff number	73269098
ETIM 9	EC001285
ETIM 8	EC001285
ECLASS 8.0	27189261
Product description	TS support rail, for VX, TS, VX SE, for W/D: 400 mm, perforated

# Approvals

---

Explanations	PCF-declaration
--------------	-----------------