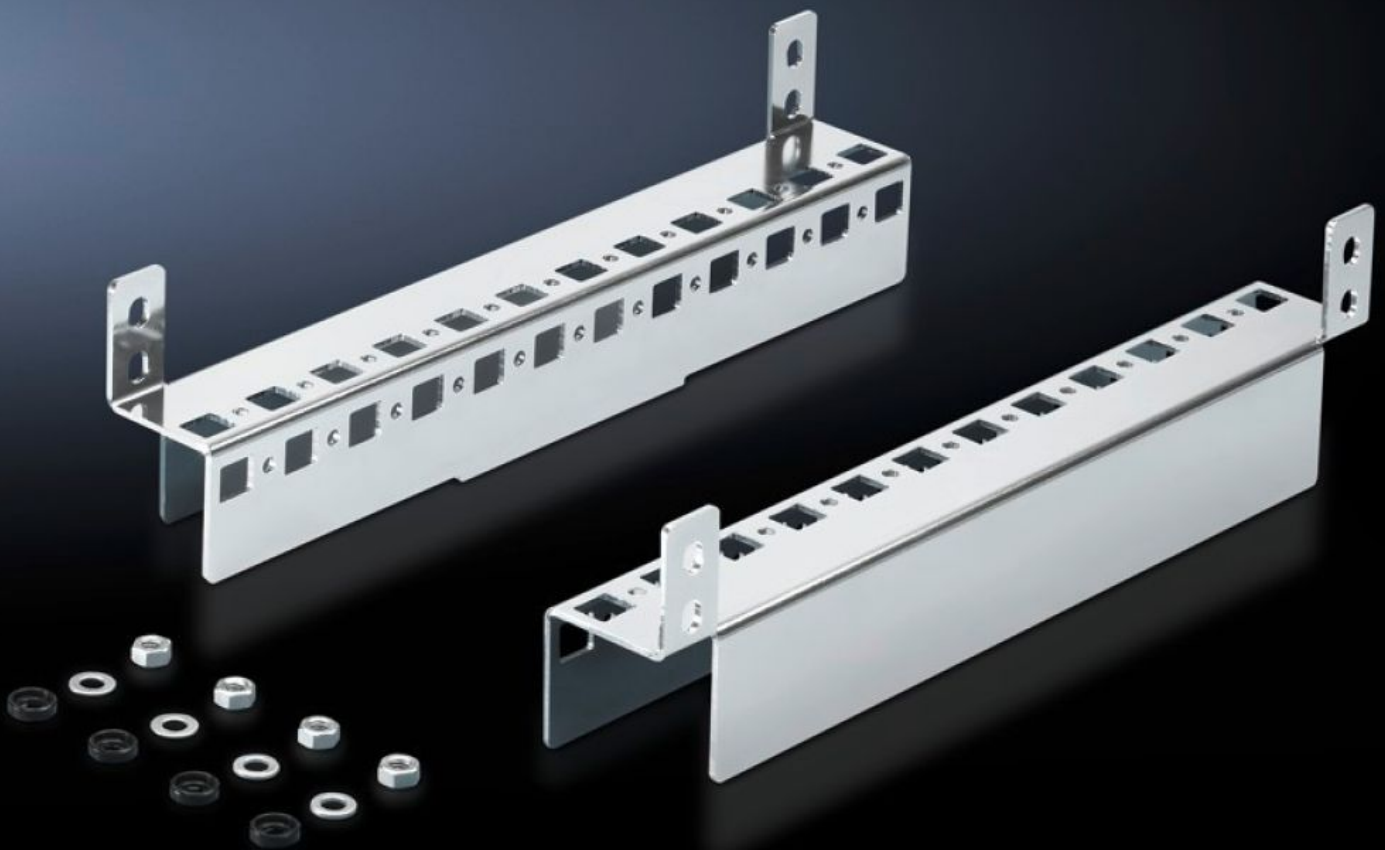


Rittal – The System.

Faster – better – everywhere.



CM 5001.370

Base configuration rail

State: 2026-04-05 (Source: rittal.com/ca-en)

ENCLOSURES

POWER DISTRIBUTION

CLIMATE CONTROL

IT INFRASTRUCTURE

SOFTWARE & SERVICES

FRIEDHELM LOH GROUP



CM 5001.370 - Base configuration rail for TP

Mounted in the housing depth on the available threaded bolts, no machining required. System punchings on two sides. Provides additional mounting options.



Features

Model No.	CM 5001.370
Product description	Mounted in the housing depth on the available threaded bolts, no machining required. System punchings on two sides. Provides additional mounting options.
Material	Carbon steel
Surface finish	Zinc-plated
Supply includes	Assembly components
Suitable for	Enclosure type: TP Depth: = 400 mm
Packaging unit	2 pc(s).
Net weight	1 kg
Gross weight	1.075 kg
PCF/VE (cradle-to-gate)	4.1 kg CO2 eq (Cat B)
Information regarding the PCF class	Category B: PCF value (cradle-to-gate) calculated approximately on the basis of the product weight and self-declared
Customs tariff number	73269098
ETIM 9	EC002625
ETIM 8	EC002625

Features

ECLASS 8.0

27189234

Product description

CM base configuration rail, for TP, for D: 400 mm