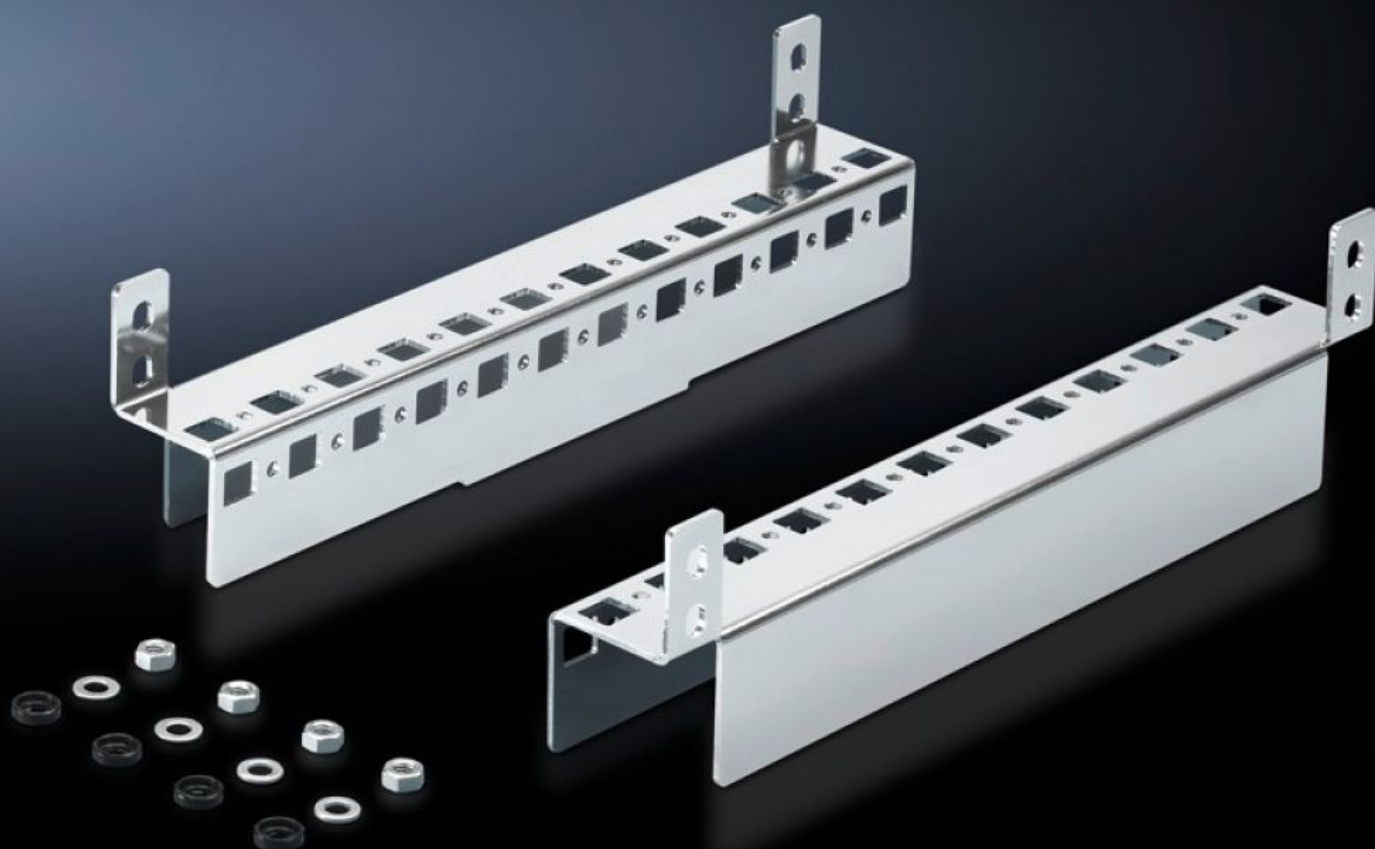
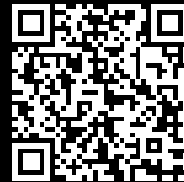


Rittal – The System.

Faster – better – everywhere.



CM 5001.371

Base configuration rail

State: 2025-06-19 (Source: [rittal.com/ca-en](https://www.rittal.com/ca-en))

ENCLOSURES

POWER DISTRIBUTION

CLIMATE CONTROL

IT INFRASTRUCTURE

SOFTWARE & SERVICES

FRIEDHELM LOH GROUP



CM 5001.371 - Base configuration rail for TP

Mounted in the housing depth on the available threaded bolts, no machining required. System punchings on two sides. Provides additional mounting options.



Features

Model No.	CM 5001.371
Product description	Mounted in the housing depth on the available threaded bolts, no machining required. System punchings on two sides. Provides additional mounting options.
Material	Carbon steel
Surface finish	Zinc-plated
Supply includes	Assembly components
Suitable for	Enclosure type: TP Depth: = 300 mm
Packaging unit	2 pc(s).
Net weight	0.6
Gross weight	0.687
Customs tariff number	73269098
EAN	4028177620605
ETIM 9	EC002625
ETIM 8	EC002625
ECLASS 8.0	27189234