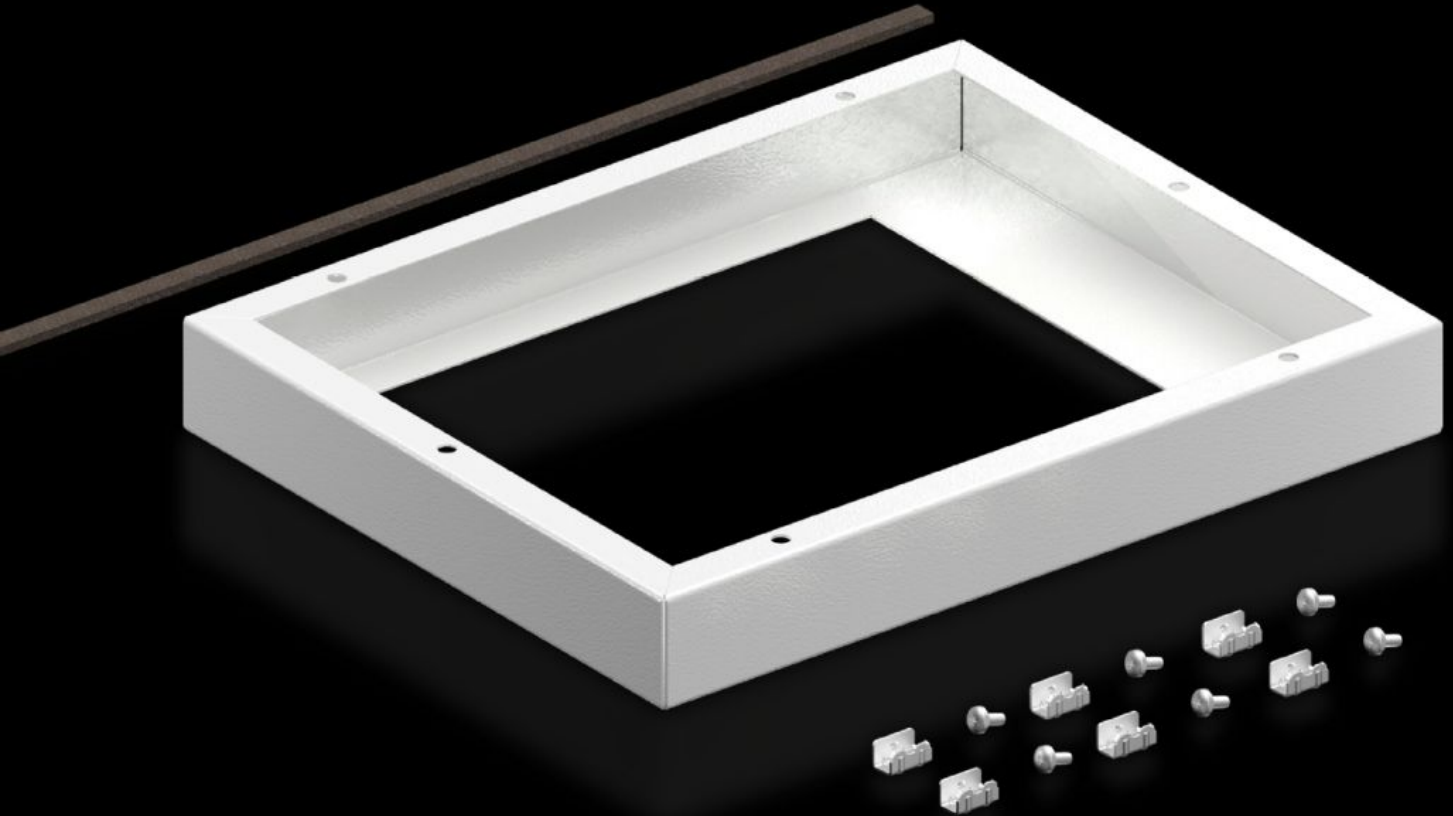


Rittal – The System.

Faster – better – everywhere.



SK 5050.700

Adapter frame for roof-mounted fan

State: 2026-05-13 (Source: rittal.com/ca-en)

ENCLOSURES

POWER DISTRIBUTION

CLIMATE CONTROL

IT INFRASTRUCTURE

SOFTWARE & SERVICES

FRIEDHELM LOH GROUP



SK 5050.700 - Adapter frame for roof-mounted fan

For mounting new generation roof ventilators on roof plates with existing cutout. With cutout W x D 258 x 258 mm.

Features

Model No.	SK 5050.700
Supply includes	Fasteners
Mounting cut-out	Width:258 mm Depth:258 mm
Dimensions	Width: 385 mm Height: 50 mm Depth: 305 mm
Packaging unit	1 pc(s).
Net weight	2.14 kg
Gross weight	2.34 kg
Customs tariff number	84145915
ETIM 9	EC000320
ECLASS 8.0	29170101
Product description	SK Adaptor for roof mounted fan, , WxD 385x305mm, cutout WxD 258x258mm, for old cutout: WxD 345x265mm, for old roof mounted fan: 3148007, 3149007, 3169007