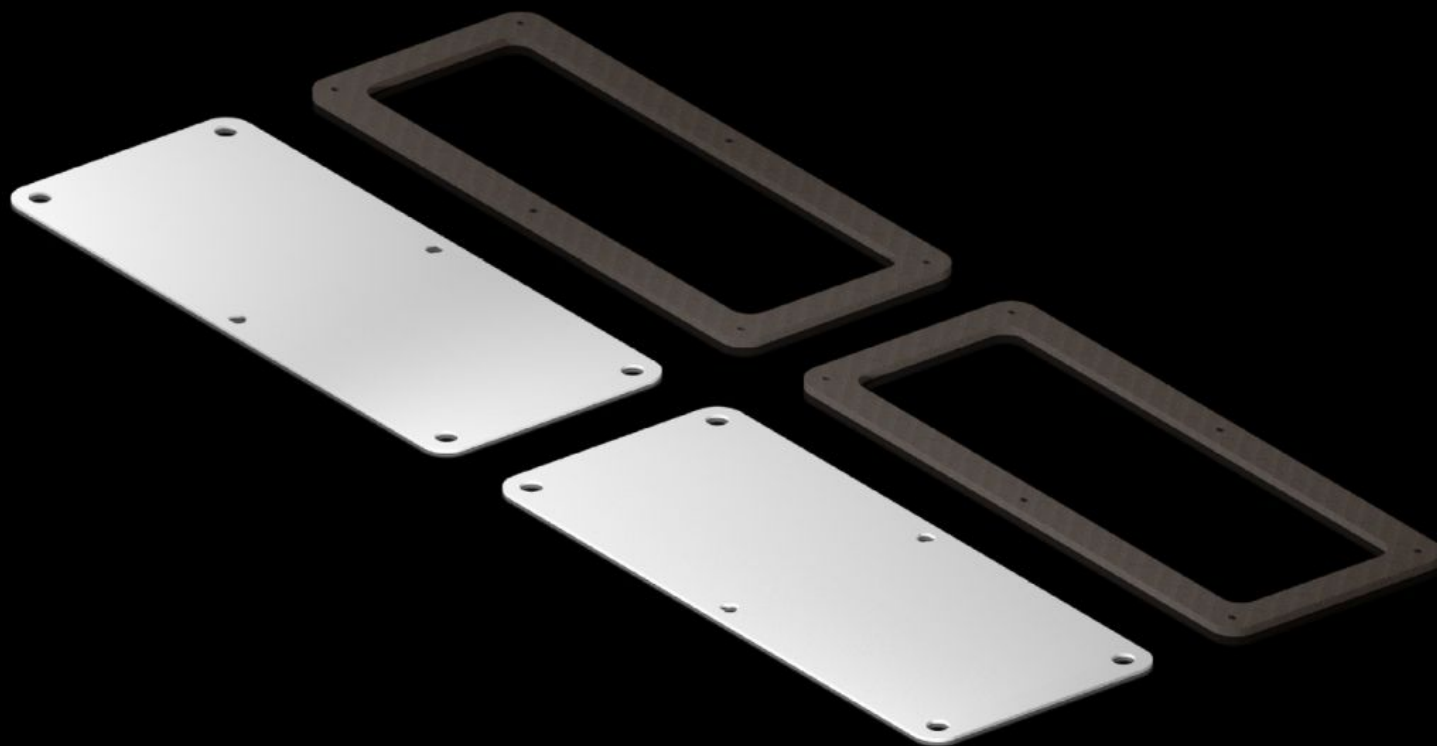


Rittal – The System.

Faster – better – everywhere.



KX 5051.405 Flange Plates

State: 2025-08-01 (Source: [rittal.com/ca-en](https://www.rittal.com/ca-en))

ENCLOSURES

POWER DISTRIBUTION

CLIMATE CONTROL

IT INFRASTRUCTURE

SOFTWARE & SERVICES

FRIEDHELM LOH GROUP



KX 5051.405 - Flange Plates for KX

Features

Model No.	KX 5051.405
Material	Carbon steel
Supply includes	Gland plate Sealing Frame
Dimensions	Width: 220 mm Depth: 90 mm
Packaging unit	2 pc(s).
Net weight	0.44
Gross weight	0.444
Customs tariff number	73079100
EAN	4028177960534
ETIM 9	EC000261
ECLASS 8.0	27180101

Approvals

Approvals	UL + C-UL - FTTA
-----------	------------------