

Rittal – The System.

Faster – better – everywhere.



DK 5501.675

Component shelf, pull-out

State: 2025-08-14 (Source: [rittal.com/ca-en](https://www.rittal.com/ca-en))

ENCLOSURES

POWER DISTRIBUTION

CLIMATE CONTROL

IT INFRASTRUCTURE

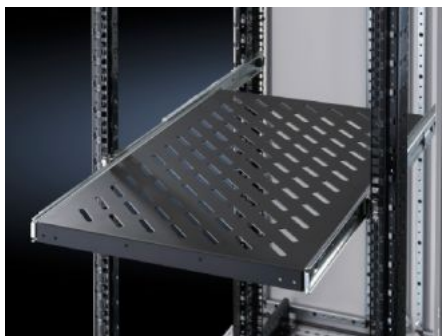
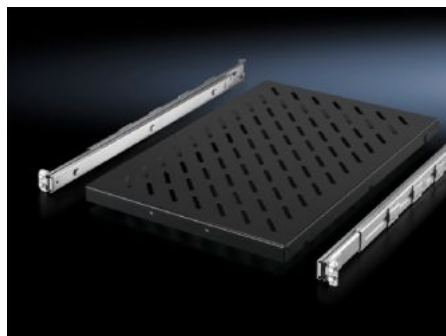
SOFTWARE & SERVICES

FRIEDHELM LOH GROUP



DK 5501.675 - Component shelf, pull-out for VX IT, TS IT, TE, TX CableNet

Mounted between two 19" mounting levels.



Features

| | |
|---------------------|---|
| Model No. | DK 5501.675 |
| Product description | For mounting to 19" profile rails or 19" mounting frames between two 19" mounting levels. |
| Benefits | Tool-free, time-saving one-person assembly from the front of the enclosure Self-locking Full withdrawal |
| Applications | Depth-variable to adapt to individual distances between levels |
| Material | Carbon steel |
| Surface finish | Base: Spray-finished Telescopic slides/installation kit: zinc-plated |
| Color | RAL 9005 |
| Supply includes | Component shelf, slotted Telescopic slide with mounting kit Assembly components |
| Load capacity | 50 kg |
| Dimensions | Width: 419 mm Depth: 500 mm |

Features

| | |
|-------------------------------------|--|
| Suitable for | Enclosure type: VX IT TS IT TE TX CableNet |
| Distance between levels | 400 - 600 mm |
| Packaging unit | 1 pc(s). |
| Net weight | 5.9 |
| Gross weight | 6.14 |
| PCF/VE (cradle-to-gate) | 23.6 kg CO2 eq (Cat B) |
| Information regarding the PCF class | Category B: PCF value (cradle-to-gate) calculated approximately on the basis of the product weight and self-declared |
| Customs tariff number | 73269098 |
| EAN | 4028177679115 |
| E-Number Sweden | E7239594 |
| ETIM 9 | EC002620 |
| ECLASS 8.0 | 27189261 |