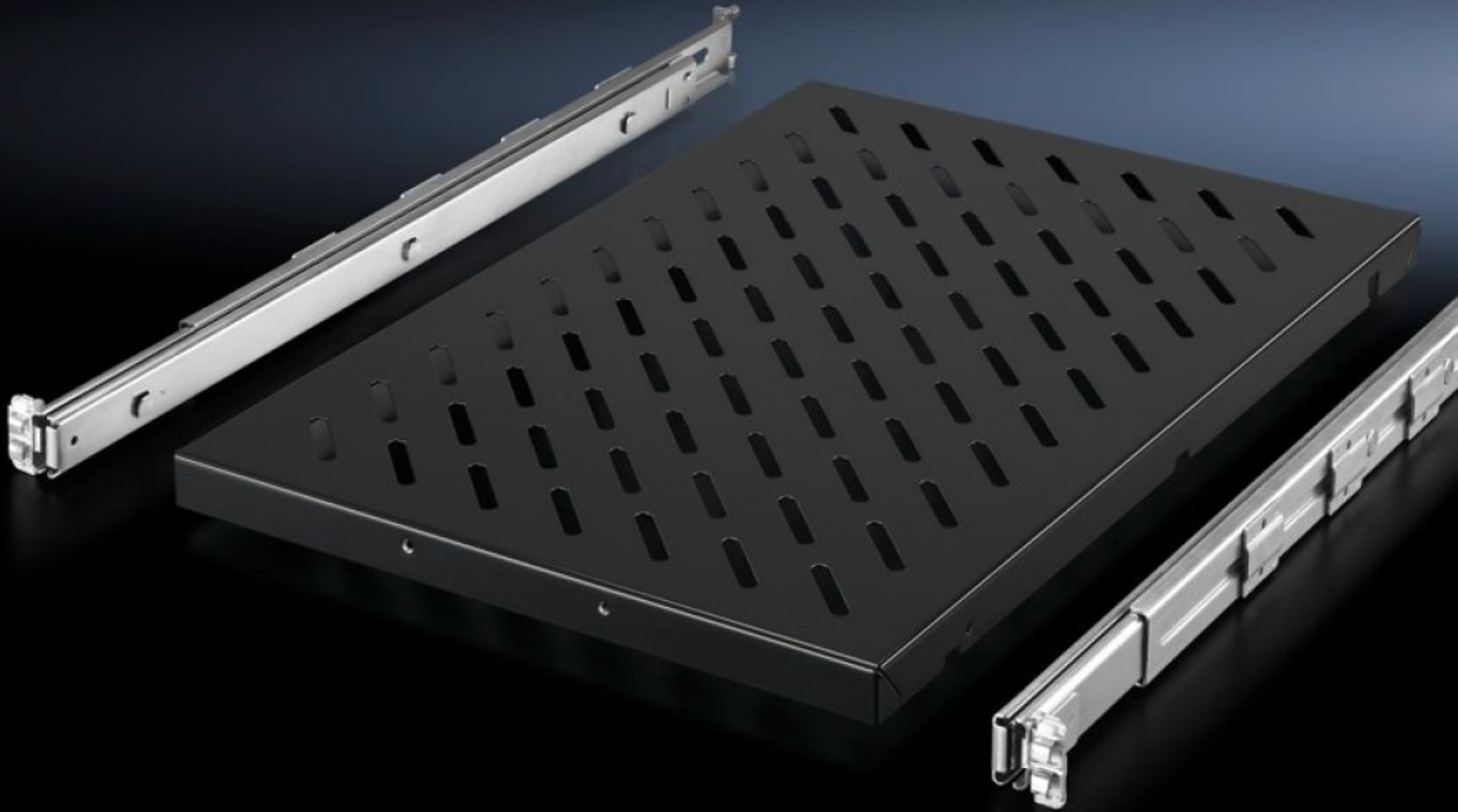


Rittal – The System.

Faster – better – everywhere.



DK 5501.715 Component shelf, pull-out

State: 2026-06-10 (Source: [rittal.com/ca-en](https://www.rittal.com/ca-en))

ENCLOSURES

POWER DISTRIBUTION

CLIMATE CONTROL

IT INFRASTRUCTURE

SOFTWARE & SERVICES

FRIEDHELM LOH GROUP



DK 5501.715 - Component shelf, pull-out for VX IT, TS IT, TE, TX CableNet

Mounted between two 19" mounting levels.



Features

Model No.	DK 5501.715
Product description	For mounting to 19" profile rails or 19" mounting frames between two 19" mounting levels.
Benefits	Tool-free, time-saving one-person assembly from the front of the enclosure Self-locking Full withdrawal
Applications	Depth-variable to adapt to individual distances between levels
Material	Carbon steel
Surface finish	Base: Spray-finished Telescopic slides/installation kit: zinc-plated
Color	RAL 9005
Supply includes	Component shelf, slotted Telescopic slide with mounting kit Assembly components
Applications	For larger spacing between levels, it is necessary to reduce the pre-mounted spacing between levels; load capacity 100 kg.
Load capacity	100 kg

Features

Dimensions	Width: 419 mm Depth: 500 mm
Suitable for	Enclosure type: VX IT TS IT TE
Distance between levels	400 - 600 mm
Packaging unit	1 pc(s).
Net weight	6.7 kg
Gross weight	7 kg
PCF/VE (cradle-to-gate)	26.7 kg CO2 eq (Cat B)
Information regarding the PCF class	Category B: PCF value (cradle-to-gate) calculated approximately on the basis of the product weight and self-declared
Customs tariff number	73269098
ETIM 9	EC002620
ECLASS 8.0	27189261
Product description	DK Component shelf, WHD: 419x1 Ux500 mm, 100 kg, distance between levels: 400-600 mm, Pull-out, RAL 9005