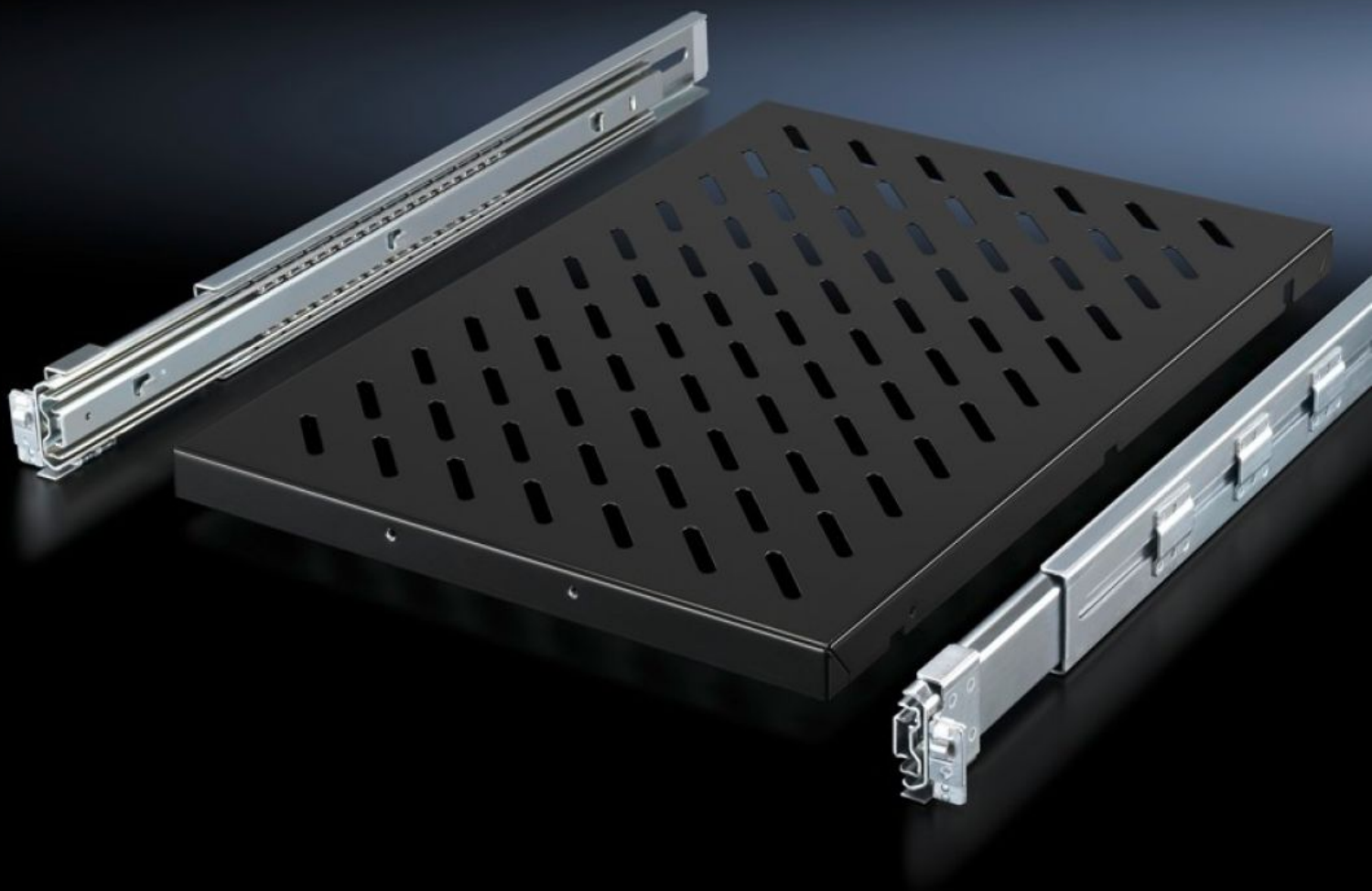
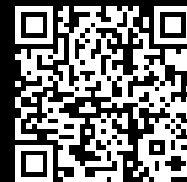


# Rittal – The System.

Faster – better – everywhere.



## DK 5501.725

### Component shelf, pull-out

State: 2025-12-07 (Source: [rittal.com/ca-en](https://www.rittal.com/ca-en))

ENCLOSURES

POWER DISTRIBUTION

CLIMATE CONTROL

IT INFRASTRUCTURE

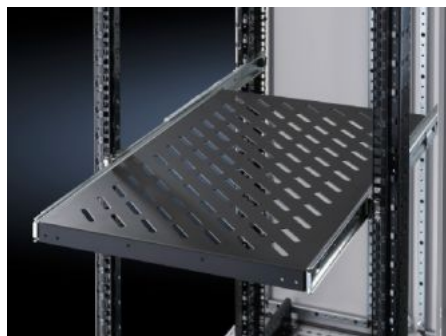
SOFTWARE & SERVICES

FRIEDHELM LOH GROUP



# DK 5501.725 - Component shelf, pull-out for VX IT, TS IT, TE, TX CableNet

Mounted between two 19" mounting levels.



## Features

Model No.	DK 5501.725
Product description	For mounting to 19" profile rails or 19" mounting frames between two 19" mounting levels.
Benefits	Tool-free, time-saving one-person assembly from the front of the enclosure Self-locking Full withdrawal
Applications	Depth-variable to adapt to individual distances between levels
Material	Carbon steel
Surface finish	Base: Spray-finished Telescopic slides/installation kit: zinc-plated
Color	RAL 9005
Supply includes	Component shelf, slotted Telescopic slide with mounting kit Assembly components
Load capacity	100 kg
Dimensions	Width: 419 mm Depth: 700 mm

# Features

Suitable for	Enclosure type: VX IT TS IT TE
Distance between levels	600 - 900 mm
Packaging unit	1 pc(s).
Net weight	10.184
Gross weight	10.72
PCF/VE (cradle-to-gate)	40.8 kg CO2 eq (Cat B)
Information regarding the PCF class	Category B: PCF value (cradle-to-gate) calculated approximately on the basis of the product weight and self-declared
Customs tariff number	73269098
EAN	4028177679160
E-Number Sweden	E7239597
ETIM 9	EC002620
ECLASS 8.0	27189261