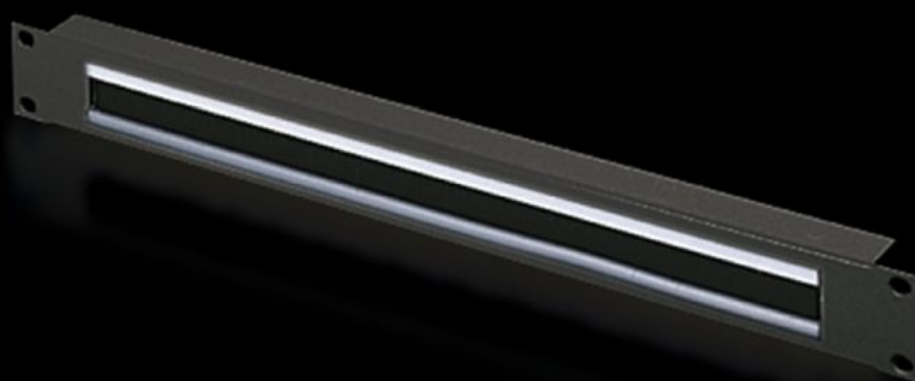


Rittal – The System.

Faster – better – everywhere.



DK 5502.255

Cable entry panel with brush strip

State: 2026-02-02 (Source: rittal.com/ca-en)

ENCLOSURES

POWER DISTRIBUTION

CLIMATE CONTROL

IT INFRASTRUCTURE

SOFTWARE & SERVICES

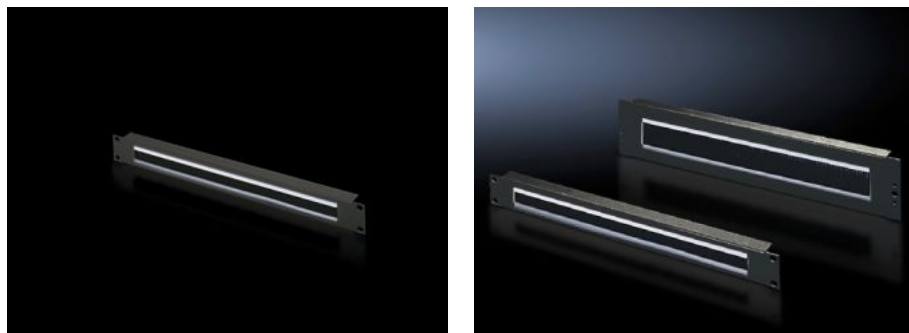
FRIEDHELM LOH GROUP



DK 5502.255 - Cable entry panel with brush strip

482.6 mm (19")

With 390 x 40 mm (2 U) or 390 x 20 mm (1 U) cut-out with brush insert, option of accommodating cable clamp straps.



Features

Model No.	DK 5502.255
Product description	For convenient, simple cable routing between two areas separated by an imperial mounting level, e.g. between the front and rear areas of the 19" mounting level.
Applications	For locking and simultaneous cable routing in installation zones to the 1 U, 482.6 mm (19") mounting standard
Material	Carbon steel Brush strip: Plastic, UL 94-HB
Surface finish	Spray-finished
Color	RAL 9005
Mounting cut-out	Width:390 mm Height:20 mm
Dimensions	Width: 482.6 mm
Height units	1 U
Packaging unit	1 pc(s).
Net weight	0.2
Gross weight	0.486

Features

Customs tariff number	73269098
EAN	4028177679368
E-Number Sweden	E7239792
ETIM 9	EC000322
ECLASS 8.0	27400604