

**Rittal – The System.**

Faster – better – everywhere.



**DK 5502.265**

**Cable entry panel with brush strip**

State: 2026-05-23 (Source: [rittal.com/ca-en](https://www.rittal.com/ca-en))

ENCLOSURES

POWER DISTRIBUTION

CLIMATE CONTROL

IT INFRASTRUCTURE

SOFTWARE & SERVICES

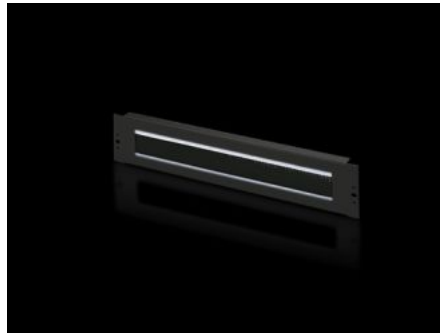
FRIEDHELM LOH GROUP



# DK 5502.265 - Cable entry panel with brush strip

## 482.6 mm (19")

With 390 x 40 mm (2 U) or 390 x 20 mm (1 U) cut-out with brush insert, option of accommodating cable clamp straps.



## Features

Model No.	DK 5502.265
Product description	For convenient, simple cable routing between two areas separated by an imperial mounting level, e.g. between the front and rear areas of the 19" mounting level.
Applications	For locking and simultaneous cable routing in installation zones to the 1 U, 482.6 mm (19") mounting standard
Material	Carbon steel Brush strip: Plastic, UL 94-HB
Surface finish	Spray-finished
Mounting cut-out	Width:390 mm Height:40 mm
Dimensions	Width: 482.6 mm
Height units	2 U
Packaging unit	1 pc(s).
Net weight	0.7 kg
Gross weight	0.703 kg
Customs tariff number	73269098

# Features

---

ETIM 9	EC000322
ECLASS 8.0	27400604
Product description	DK Cable entry panel, 2 U, 482.6 mm (19"), WxH: 390x40 mm, RAL 9005

---