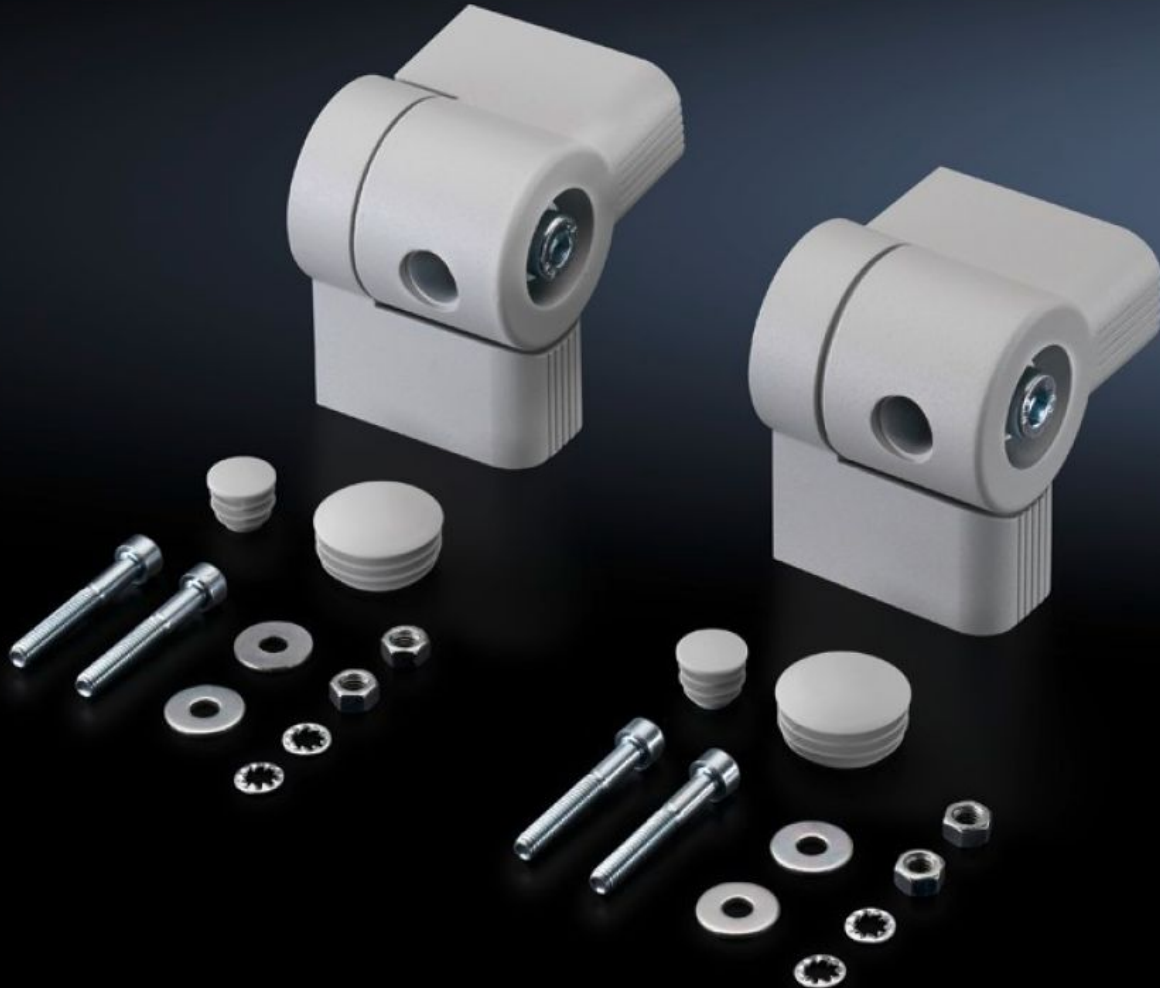


Rittal – The System.

Faster – better – everywhere.



CP 6016.200 Housing connectors

State: 2026-06-29 (Source: rittal.com/ca-en)

ENCLOSURES

POWER DISTRIBUTION

CLIMATE CONTROL

IT INFRASTRUCTURE

SOFTWARE & SERVICES

FRIEDHELM LOH GROUP



CP 6016.200 - Housing connectors adjustable

Between command panels, terminal boxes, compact enclosures and horizontal or vertical surfaces. Pre-assemble the two halves of the connector, slide into one another and fasten with locking screw and/or adjust the pivot bracket.



Features

Model No.	CP 6016.200
Product description	Between command panels, terminal boxes, compact enclosures and horizontal or vertical surfaces. Pre-assemble the two halves of the connector, slide into one another and fasten with locking screw and/or adjust the pivot bracket.
Material	Die-cast zinc
Surface finish	Powder-coated
Color	RAL 7035
Supply includes	Assembly components for both sides.
Note	The locking screws may be exchanged for standard, commercially available clamping levers (M10 x 50 mm).
Rotation angle/swivel area	$\pm 105^\circ$ adjustable in 7.5° stepped increments
Packaging unit	2 pc(s).
Net weight	1.6 kg
Gross weight	1.778 kg
Customs tariff number	79070000
ETIM 9	EC002622

Features

ECLASS 8.0

27189263

Product description

CP Enclosure connectors, adjustable