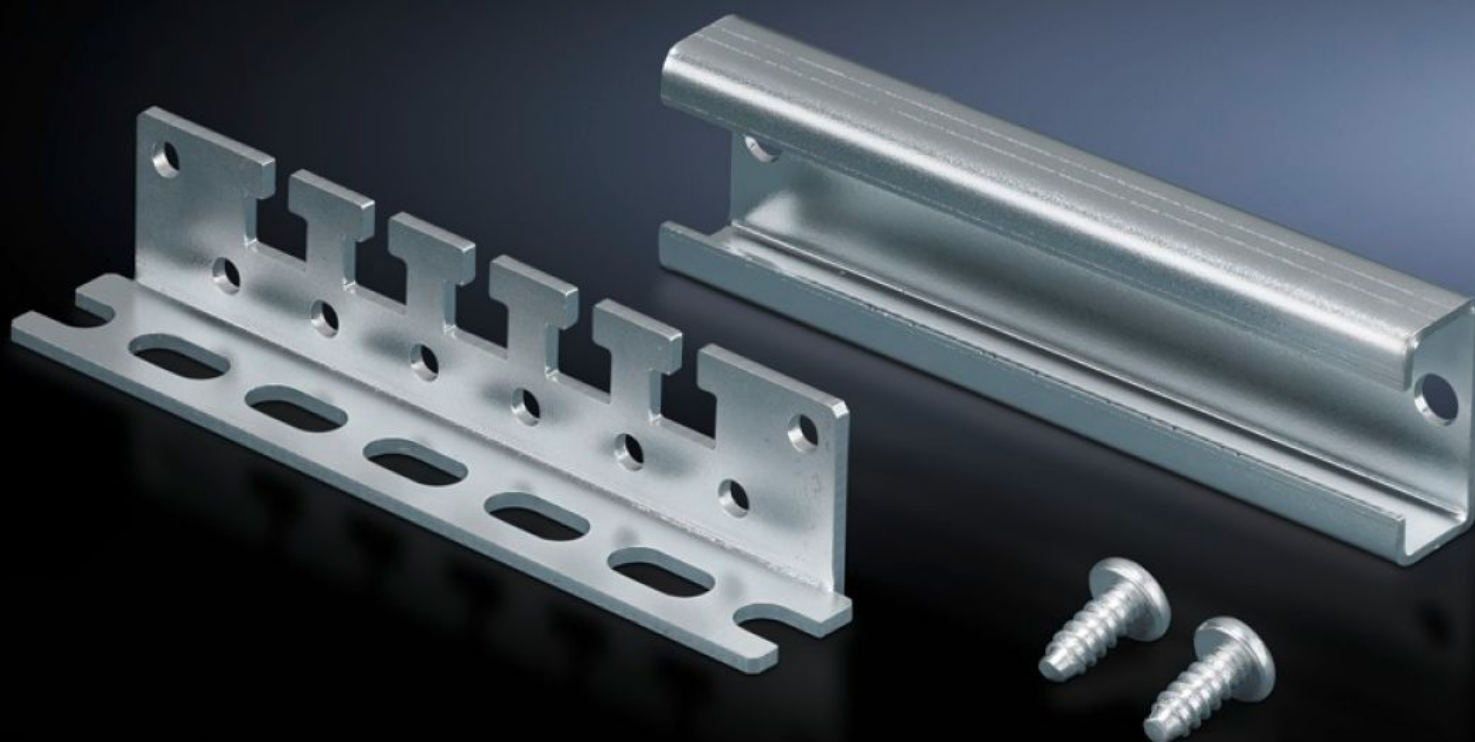
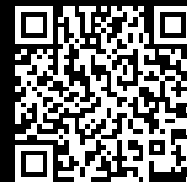


**Rittal – The System.**

Faster – better – everywhere.



# CP 6052.000

## Cable clamping bracket

State: 2025-06-21 (Source: [rittal.com/ca-en](https://www.rittal.com/ca-en))

ENCLOSURES

POWER DISTRIBUTION

CLIMATE CONTROL

IT INFRASTRUCTURE

SOFTWARE & SERVICES

FRIEDHELM LOH GROUP



# CP 6052.000 - Cable clamping bracket

For installation in command panel with support arm connection Ø 130 mm or 120 x 65 mm, cable clamping optionally using cable ties or cable clamps.



## Features

Model No.	CP 6052.000
Product description	Cable clamping is optional by using cable clamps, 2597.000 cable ties or commercially available cable ties.
Applications	For installation in command panel with 120 x 65 mm or 130 mm dia. mounting cut-out
Material	Carbon steel
Surface finish	Zinc-plated
Supply includes	Incl. C rail and mounting screws.
Note	Bracket height = 25 mm with fitted C rail 40 mm.
Packaging unit	1 pc(s).
Net weight	0.146
Gross weight	0.156
PCF per pack (cradle-to-gate)	0.6 kg CO2 eq (Cat B)
Note on PCF category	Category B: PCF value (cradle-to-gate) based on the product weight, approximately calculated and self-declared
Customs tariff number	73269098
EAN	4028177188273
ETIM 9	EC000322

# Features

---

ECLASS 8.0

27400604