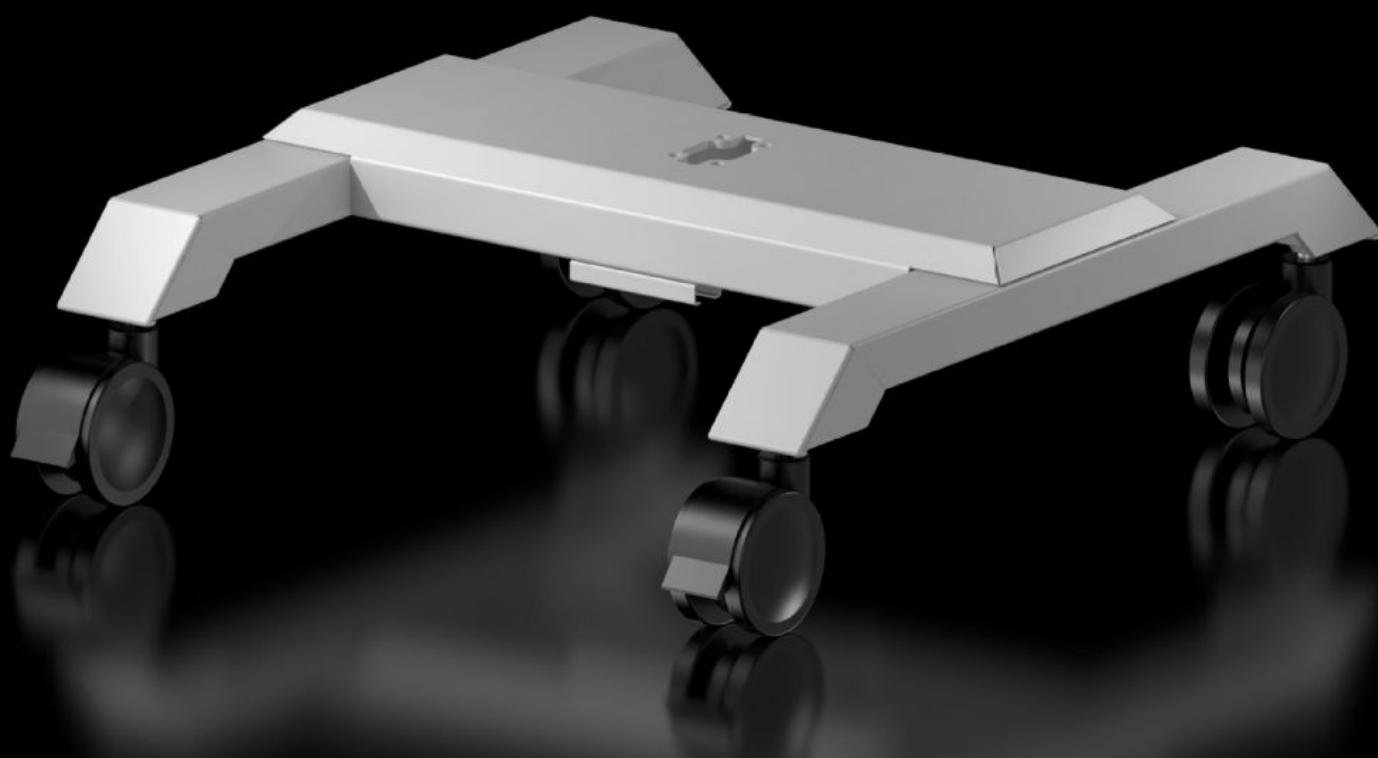


Rittal – The System.

Faster – better – everywhere.



CP 6106.400

Pedestal Base Plates

State: 2025-08-04 (Source: [rittal.com/ca-en](https://www.rittal.com/ca-en))

ENCLOSURES

POWER DISTRIBUTION

CLIMATE CONTROL

IT INFRASTRUCTURE

SOFTWARE & SERVICES

FRIEDHELM LOH GROUP



CP 6106.400 - Pedestal Base Plates modular, CP 60 large

Features

Model No.	CP 6106.400
Version	mobile
Material	Steel
Color	RAL 7035
Supply includes	Pedestal base plate/cross member Twin castors
Note	Support arm system CP 120 may also be used by simply drilling a hole. Weight capacity 50 kg
Load capacity, static	35 kg
Dimensions	Width: 600 mm Height: 205 mm Depth: 650 mm
Packaging unit	1 pc(s).
Net weight	12.62
Gross weight	13.42
Customs tariff number	73269098
EAN	4028177698451
ETIM 9	EC002535
ECLASS 8.0	27182604