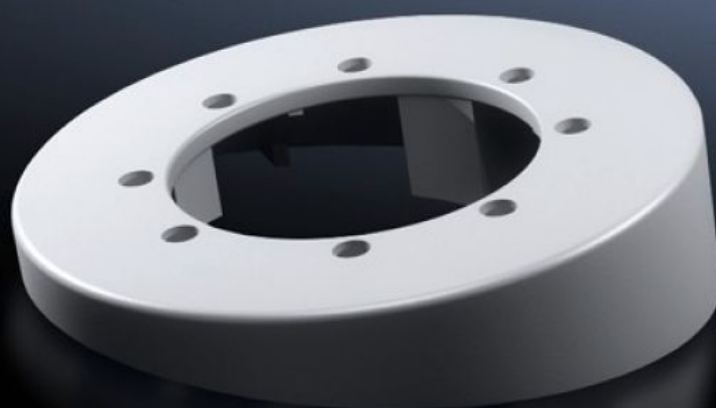
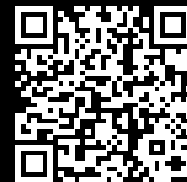


Rittal – The System.

Faster – better – everywhere.



CP 6206.400 Tilting adapter 10°

State: 2025-09-09 (Source: [rittal.com/ca-en](https://www.rittal.com/ca-en))

ENCLOSURES

POWER DISTRIBUTION

CLIMATE CONTROL

IT INFRASTRUCTURE

SOFTWARE & SERVICES

FRIEDHELM LOH GROUP



CP 6206.400 - Tilting adapter 10° for support arm connection Ø 130 mm

Mounted between coupling, system 60/120 or attachment, system 60/120 or angle coupling system 60/120, and the command panel.

Features

Model No.	CP 6206.400
Version	For mounting between the command panel and Coupling CP 60/120/180 for support arm connection Ø 130 mm, 6206.300, 6212.300, 6218.300 Attachment CP 60/120 for support arm connection Ø 130 mm, 6206.320, 6212.320 Angle coupling 90° CP 60/120 for support arm connection Ø 130 mm, CP 6206.380, 6212.380
Product description	Mounted between coupling, system 60/120 or attachment, system 60/120 or angle coupling, system 60/120, and the command panel.
Material	Die-cast zinc
Color	RAL 7035
Supply includes	Seals Fasteners
Rifid y/n	Yes
Packaging unit	1 pc(s).
Net weight	0.6
Gross weight	0.617
Customs tariff number	79070000
EAN	4028177684423
ETIM 9	EC000882
ECLASS 8.0	27400556

Approvals

Explanations

Manufacturer's declaration