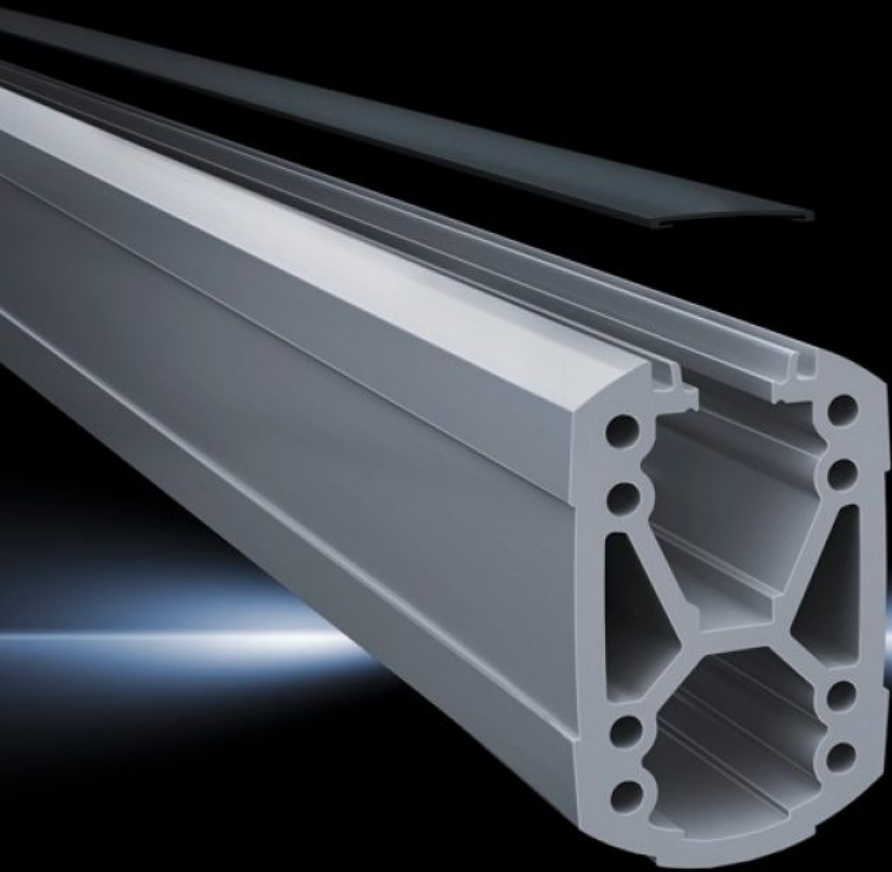


**Rittal – The System.**

Faster – better – everywhere.



**CP 6212.210**

**Support section CP 120**

State: 2025-12-13 (Source: [rittal.com/ca-en](http://rittal.com/ca-en))

ENCLOSURES

POWER DISTRIBUTION

CLIMATE CONTROL

IT INFRASTRUCTURE

SOFTWARE & SERVICES

FRIEDHELM LOH GROUP



# CP 6212.210 - Support section CP 120 open

Attachment to the connection components with 4 self-tapping screws in the screw channel. May be cut to any required length, no thread-tapping required. Open cable duct for easy servicing access and for pre-assembled cables with connectors, lockable via cover profile. X-shaped profiling for greater load capacity, large cable routing channels. Upper channel suitable for cables with large connectors (e.g. DVI or VGA) and available/usable throughout the entire system.

## Features

Model No.	CP 6212.210
Product description	Attached to the connection components with 4 self-tapping screws in the screw channel. May be cut to any required length, no thread-tapping required. Open cable duct for easy servicing access and for pre-assembled cables with connectors, lockable via cover profile. X-shaped profiling for greater load capacity, large cable routing channels. Upper channel suitable for cables with large connectors (e.g. DVI or VGA) and available/usable throughout the entire system.
Material	Support section: Extruded aluminum section Cover: Plastic
Color	Support section: RAL 7035 Cover: RAL 7024
Supply includes	Support section Clip-in lid
Length	2,000 mm
Dimensions	Width: 75 mm Height: 120 mm Length: 2,000 mm
Packaging unit	1 pc(s).
Net weight	18.265
Gross weight	18.74
Customs tariff number	76042100
EAN	4028177683983

# Features

---

ETIM 9	EC000882
ECLASS 8.0	27400556

---

# Approvals

---

Explanations	Manufacturer's declaration
--------------	----------------------------