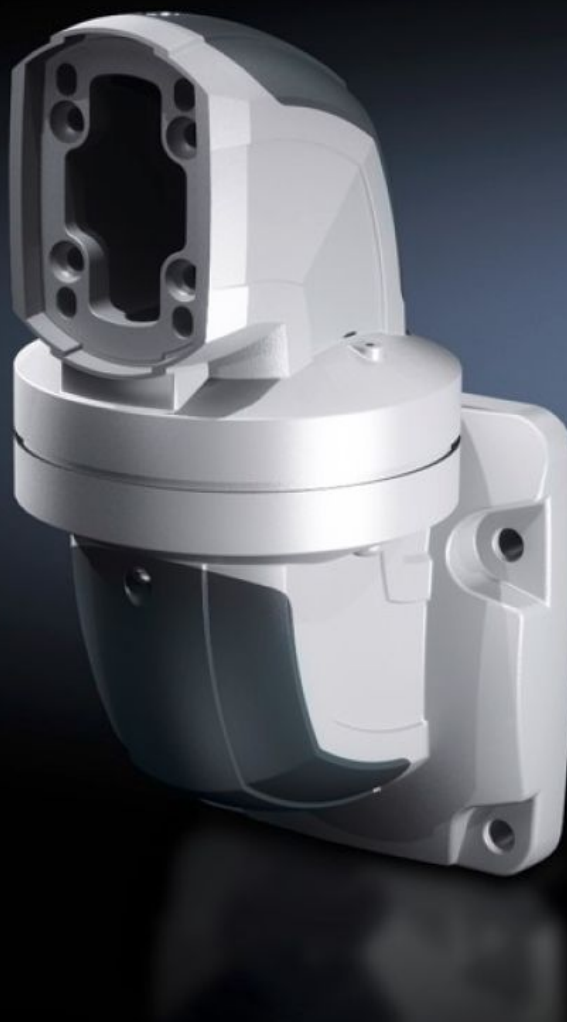


# Rittal – The System.

Faster – better – everywhere.



## CP 6212.740

## Wall-mounted hinge CP 120

State: 2025-09-09 (Source: [rittal.com/ca-en](https://www.rittal.com/ca-en))

ENCLOSURES

POWER DISTRIBUTION

CLIMATE CONTROL

IT INFRASTRUCTURE

SOFTWARE & SERVICES

FRIEDHELM LOH GROUP



# CP 6212.740 - Wall-mounted hinge CP 120 Horizontal outlet

For swivel mounting of the support arm on vertical surfaces. Removable cover for easy cable routing.

## Features

Model No.	CP 6212.740
Product description	For swivel mounting of the support arm on vertical surfaces. Removable cover for easy cable routing.
Material	Wall-mounted hinge: Cast aluminum Cover: Plastic
Color	Wall-mounted hinge: RAL 7035 Cover: RAL 7024
Supply includes	Seals Screws for restricting rotation range Adjusting screws Self-tapping screws for support section attachment
Rotating/tilting	Yes
Rotation angle/swivel area	Approximately 330° The range of rotation can be limited by inserting the screws provided.
Packaging unit	1 pc(s).
Net weight	6.38
Gross weight	6.66
Customs tariff number	76169990
EAN	4028177684119
ETIM 9	EC000882
ECLASS 8.0	27400556

# Approvals

---

Explanations

Manufacturer's declaration