

Rittal – The System.

Faster – better – everywhere.



CP 6372.541 Comfort Panel

State: 2025-12-09 (Source: [rittal.com/ca-en](https://www.rittal.com/ca-en))

ENCLOSURES

POWER DISTRIBUTION

CLIMATE CONTROL

IT INFRASTRUCTURE

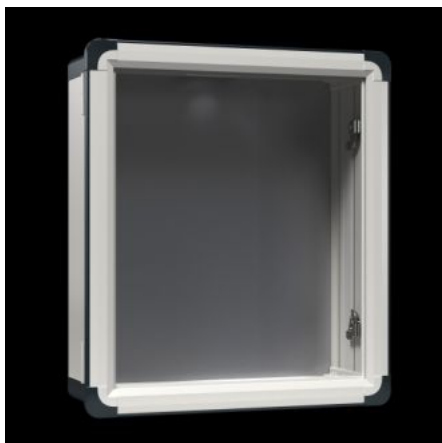
SOFTWARE & SERVICES

FRIEDHELM LOH GROUP



CP 6372.541 - Comfort Panel

Aluminum housing, high thermal conductivity for optimum passive heat dissipation. Low weight coupled with high stability. Protection category IP 65 to IEC 60 529.



Features

Model No.	CP 6372.541
Version	Support arm connection, rectangular 120 x 65 mm
Benefits	Aluminum housing, high thermal conductivity for optimum passive heat dissipation. Low weight coupled with high stability Compatible with all Rittal stand and support arm systems
Material	Housing: Extruded aluminum section Corner pieces: Die-cast zinc Corner protectors: Plastic
General color	Natural anodized
Color	Housing: Natural anodized. Corner pieces: RAL 7035 Corner protectors: Similar to RAL 7024
Supply includes	Enclosure with cut-out for support arm connection 3 mm double-bit lock insert may be exchanged for 41 mm lock inserts, plastic handles and T handles, type C Seals and assembly components for front panels Hinged rear panel, hinging on the longest side

Features

Dimensions	Width: 628.5 mm Height: 508.5 mm Depth: 92 mm
Installation depth	74 mm
Protection category IP to IEC 60529	IP 65
Protection category NEMA	NEMA 12
Suitable for front panel width	520 mm
Suitable for front panel height	400 mm
Version	Service access from rear
Note	The support arm connection may be swapped over by rotating the enclosure
Base material	Aluminum
Lock	Lock version: Screw lock
Packaging unit	1 pc(s).
Net weight	8.8
Gross weight	10.4
EAN	4028177663060
ETIM 9	EC002504
ECLASS 8.0	27180505

Approvals

Approvals	UL + C-UL (listed)
Explanations	Declaration of conformity Declaration of conformity UK