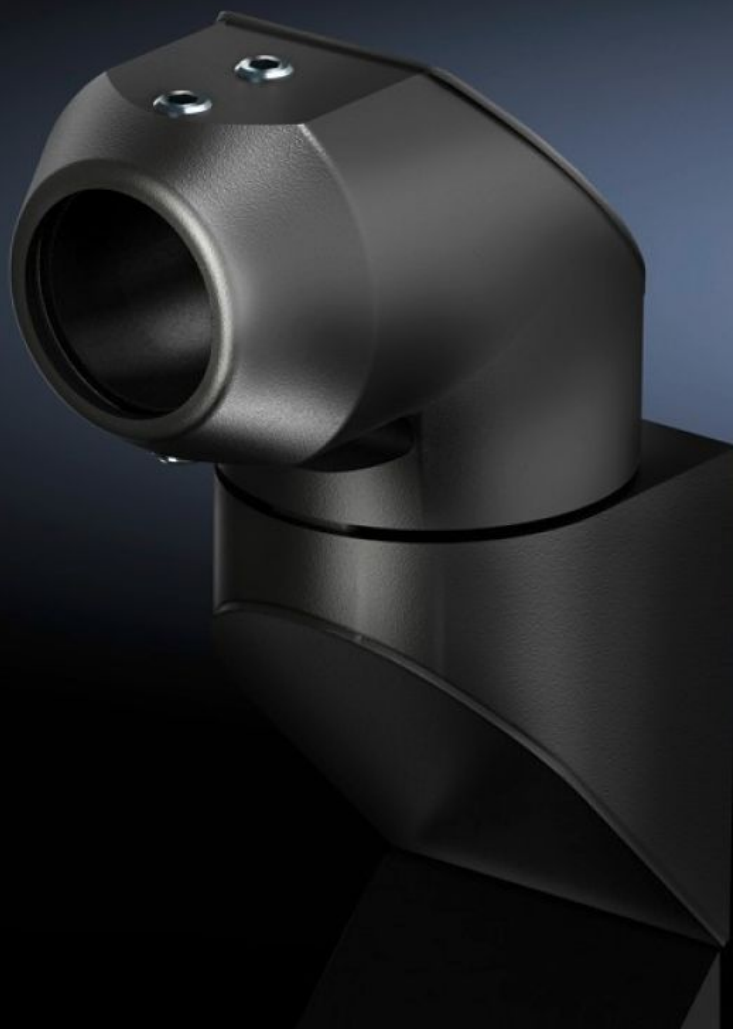


Rittal – The System.

Faster – better – everywhere.



CP 6501.150

Wall-mounted hinge CP, 40, steel

State: 2026-02-08 (Source: [rittal.com/ca-en](https://www.rittal.com/ca-en))

ENCLOSURES

POWER DISTRIBUTION

CLIMATE CONTROL

IT INFRASTRUCTURE

SOFTWARE & SERVICES

FRIEDHELM LOH GROUP



CP 6501.150 - Wall-mounted hinge CP, 40, steel

For swivel mounting of the support arm on a vertical surface.

Features

Model No.	CP 6501.150
Material	Cast aluminum
Surface finish	Textured paint
Color	RAL 7024
Rotating/tilting	Yes
Rotation angle/swivel area	approx. 330°, provided that the upper joint can move freely
Packaging unit	1 pc(s).
Net weight	2.119
Gross weight	2.128
Customs tariff number	76169990
EAN	4028177436077
ETIM 9	EC000882
ECLASS 8.0	27400556

Approvals

Explanations	Manufacturer's declaration
--------------	----------------------------