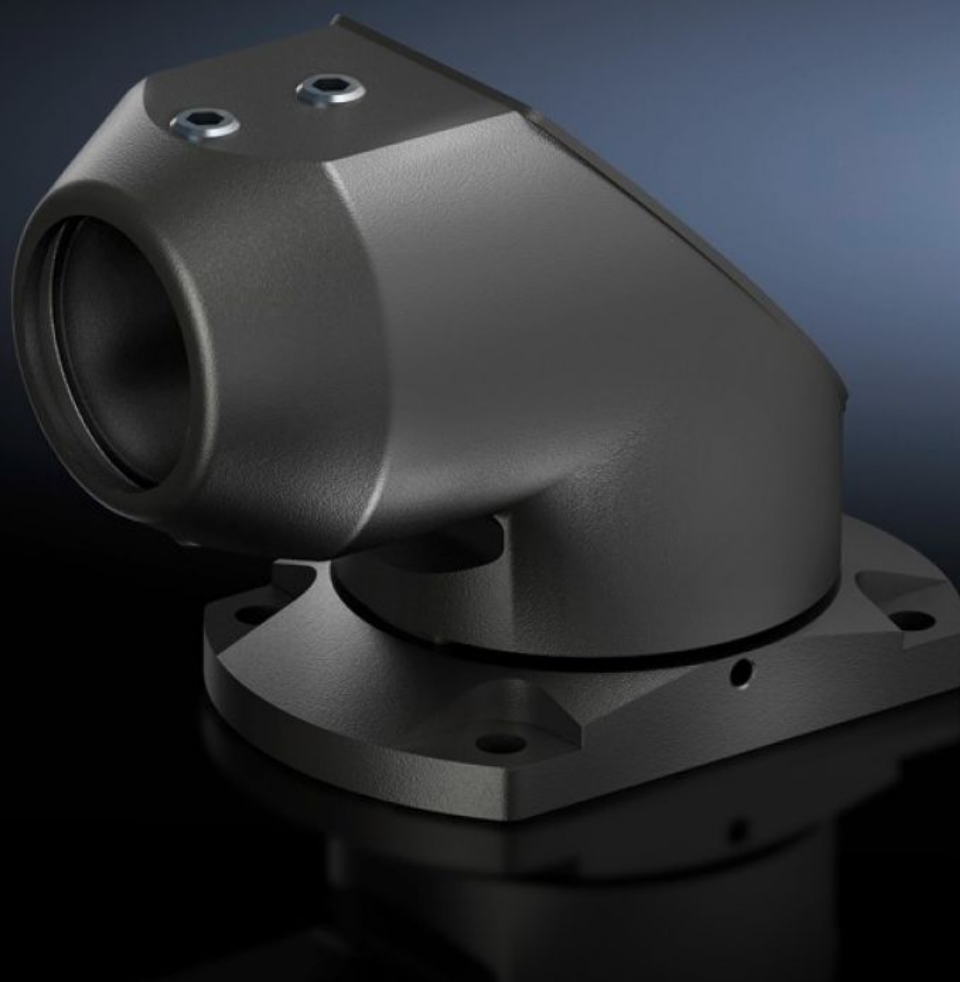


Rittal – The System.

Faster – better – everywhere.



CP 6501.160

Top-mounted joint CP 40, steel

State: 2026-01-31 (Source: [rittal.com/ca-en](https://www.rittal.com/ca-en))

ENCLOSURES

POWER DISTRIBUTION

CLIMATE CONTROL

IT INFRASTRUCTURE

SOFTWARE & SERVICES

FRIEDHELM LOH GROUP



CP 6501.160 - Top-mounted joint CP 40, steel

For swivel mounting of the support arm system on a horizontal surface – also suitable for ceiling mounting.

Features

Model No.	CP 6501.160
Material	Cast aluminum
Surface finish	Textured paint
Color	RAL 7024
Rotating/tilting	Yes
Rotation angle/swivel area	Approximately 300°
Packaging unit	1 pc(s).
Net weight	1.699
Gross weight	1.735
Customs tariff number	76169990
EAN	4028177436084
ETIM 9	EC000882
ECLASS 8.0	27400556

Approvals

Explanations	Manufacturer's declaration
--------------	----------------------------