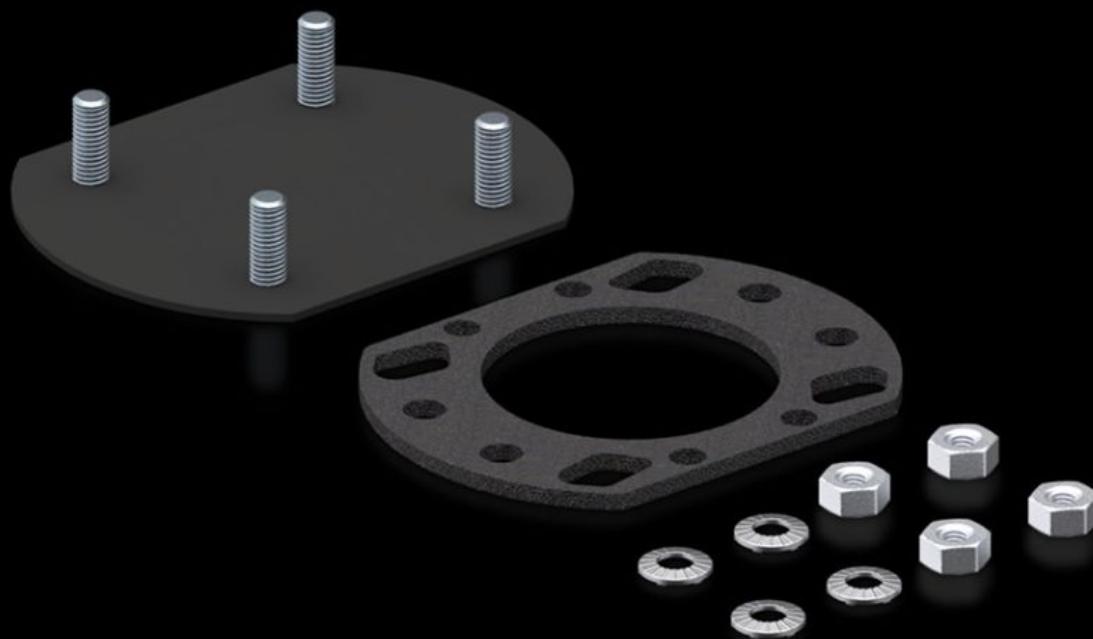


# Rittal – The System.

Faster – better – everywhere.



## CP 6505.200 Cover plate

State: 2026-02-10 (Source: [rittal.com/ca-en](https://www.rittal.com/ca-en))

ENCLOSURES

POWER DISTRIBUTION

CLIMATE CONTROL

IT INFRASTRUCTURE

SOFTWARE & SERVICES

FRIEDHELM LOH GROUP



# CP 6505.200 - Cover plate for support arm connection

Cover plates for round and square support arm connections.

## Features

Model No.	CP 6505.200
Product description	To securely lock an unused support arm connection in the housing
Material	Carbon steel
Surface finish	Spray-finished
Color	RAL 7024
Supply includes	Seal and assembly components
Suitable for support arm connection	rectangular 90 x 71 mm
Note	If there are already 2 support arm cut-outs provided with the Comfort Panel, Optipanel and Compact Panel command panels, a cover plate is included with the supply of the housing.
Packaging unit	1 pc(s).
Net weight	0.1
Gross weight	0.101
PCF/VE (cradle-to-gate)	0.5 kg CO2 eq (Cat B)
Information regarding the PCF class	Category B: PCF value (cradle-to-gate) calculated approximately on the basis of the product weight and self-declared
Customs tariff number	73269098
EAN	4028177389823
ETIM 9	EC000456
ECLASS 8.0	27189263