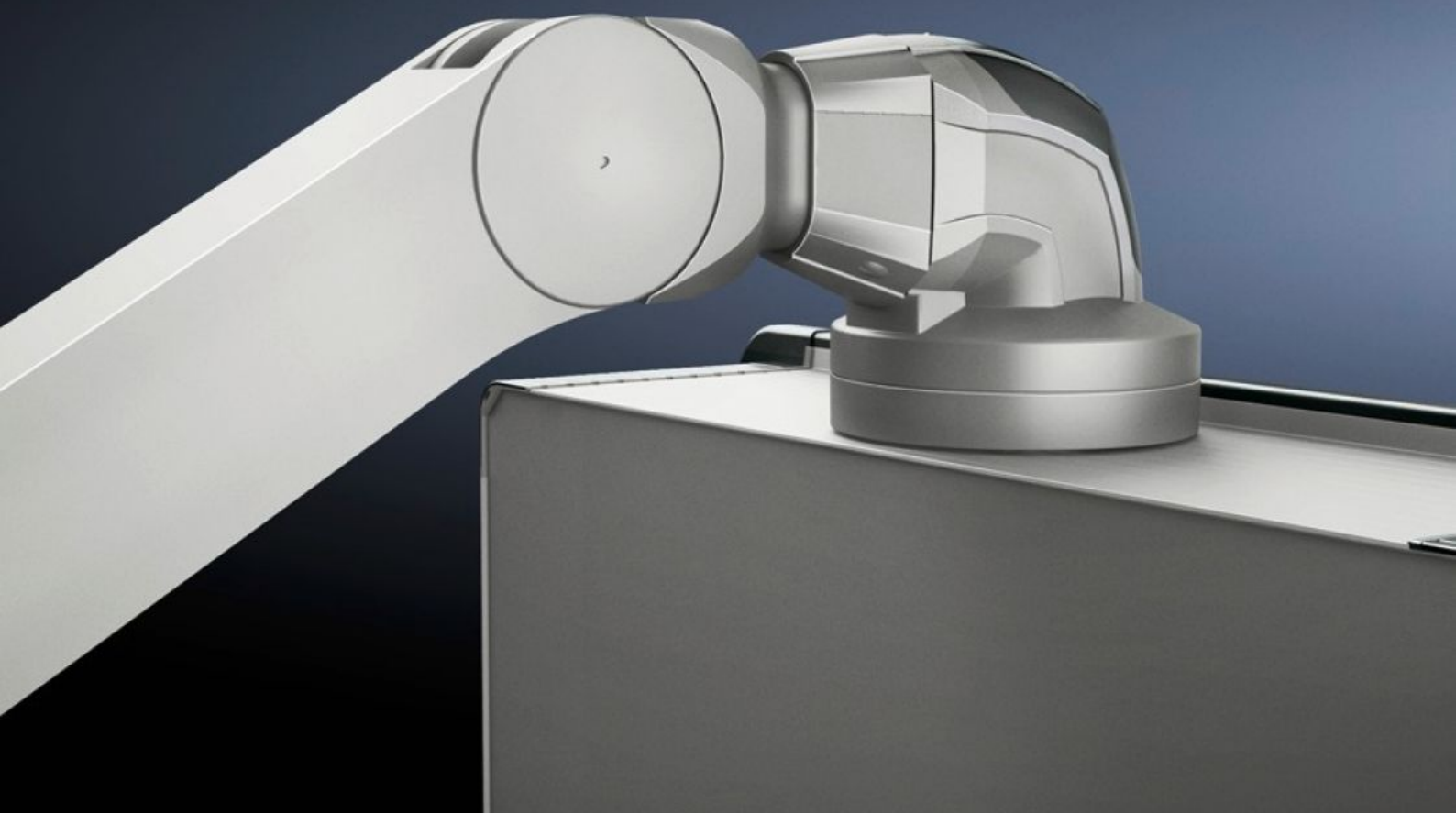


# Rittal – The System.

Faster – better – everywhere.



## CP 6510.330

## Support Arm, Height Adjustable

State: 2026-02-14 (Source: [rittal.com/ca-en](https://rittal.com/ca-en))

ENCLOSURES

POWER DISTRIBUTION

CLIMATE CONTROL

IT INFRASTRUCTURE

SOFTWARE & SERVICES

FRIEDHELM LOH GROUP



# CP 6510.330 - Support Arm, Height Adjustable for support arm systems CP 120

Offers enhanced ergonomics

## Features

Model No.	CP 6510.330
Product description	offers improved ergonomics with adjustment range for tall and short operators, for seated and standing work adjustable to up to 800 mm as required using an adjustment screw on the front of the support arm. Clip-off plastic panels for access to integral cable routing.
Benefits	<p>Precise coordination of the compression spring to the housing weight via an adjusting screw on the rear of the support arm</p> <p>Complete functional reliability – if the compression spring breaks, the arm will remain in position</p> <p>Tilting angle of the mounted housing is identical in every height position</p> <p>Cables with connectors such as DVI and VGA are also easily inserted</p> <p>Integral locking in three stages</p>
Color	RAL 9006
Supply includes	Assembly components
Length	1,090 mm
Installation options	<p>Maximum cross-section for cable entry 18 x 39 mm</p> <p>Maximum number of introduced cables 3x dia. 7 mm and 2x dia. 8.5 mm</p>
Note on Model No.:	Weight range applies to configured housing and vertical support section.
Dimensions	Length: 1,090 mm
Load	15 kg...32 kg
Packaging unit	1 pc(s).

# Features

Net weight	18
Gross weight	19
Customs tariff number	73269098
EAN	4028177598140
ECLASS 8.0	27189263

# Approvals

Explanations	Manufacturer's declaration
--------------	----------------------------