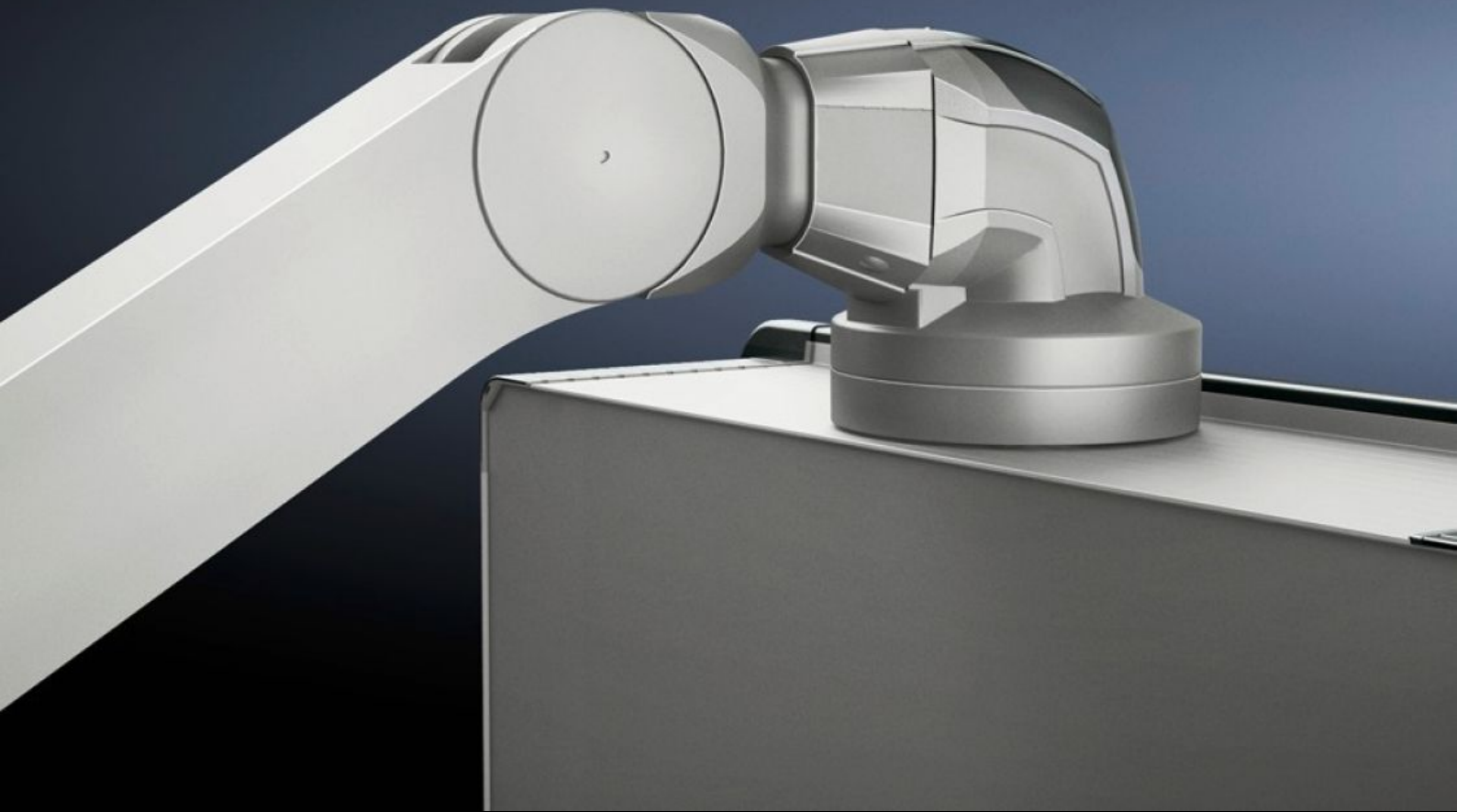


Rittal – The System.

Faster – better – everywhere.



CP 6510.340

Support Arm, Height Adjustable

State: 2026-04-04 (Source: [rittal.com/ca-en](https://www.rittal.com/ca-en))

ENCLOSURES

POWER DISTRIBUTION

CLIMATE CONTROL

IT INFRASTRUCTURE

SOFTWARE & SERVICES

FRIEDHELM LOH GROUP



CP 6510.340 - Support Arm, Height Adjustable for support arm systems CP 120

Offers enhanced ergonomics

Features

Model No.	CP 6510.340
Product description	offers improved ergonomics with adjustment range for tall and short operators, for seated and standing work adjustable to up to 800 mm as required using an adjustment screw on the front of the support arm. Clip-off plastic panels for access to integral cable routing.
Benefits	Precise coordination of the compression spring to the housing weight via an adjusting screw on the rear of the support arm Complete functional reliability – if the compression spring breaks, the arm will remain in position Tilting angle of the mounted housing is identical in every height position Cables with connectors such as DVI and VGA are also easily inserted Integral locking in three stages
Color	RAL 9006
Supply includes	Assembly components
Length	1,090 mm
Installation options	Maximum cross-section for cable entry 18 x 39 mm Maximum number of introduced cables 3x dia. 7 mm and 2x dia. 8.5 mm
Note on Model No.:	Weight range applies to configured housing and vertical support section.
Dimensions	Length: 1,090 mm
Load	20 kg...40 kg
Packaging unit	1 pc(s).

Features

Net weight	18.257 kg
Gross weight	19.218 kg
Customs tariff number	73269098
ECLASS 8.0	27189263
Product description	CP Support arm, height-adjustable, for support arm system CP 120, L: 1090 mm, for weight range 20-40 kg

Approvals

Explanations	Manufacturer's declaration
--------------	----------------------------