

# Rittal – The System.

Faster – better – everywhere.



## CP 6536.010

# Command panel housing with door

State: 2026-07-07 (Source: [rittal.com/ca-en](https://www.rittal.com/ca-en))

ENCLOSURES

POWER DISTRIBUTION

CLIMATE CONTROL

IT INFRASTRUCTURE

SOFTWARE & SERVICES

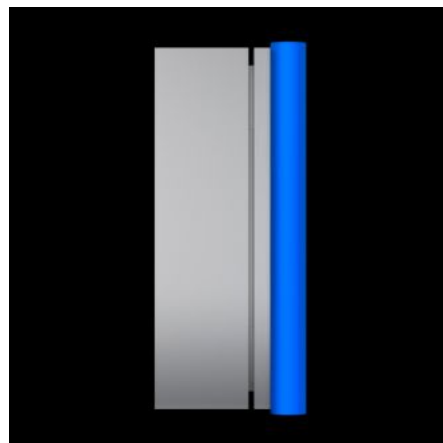
FRIEDHELM LOH GROUP



# CP 6536.010 - Command panel housing with door

## Stainless steel

Operating door for enclosure made from stainless steel 1.4301, (AISI 304) with handle strips made from food-grade plastic. Can be combined with CP40 support arm system, stainless steel.



## Features

Model No.	CP 6536.010
Version	With support arm connection CP 40, stainless steel
Material	Housing and door: Stainless steel 1.4301 (AISI 304) Handle strips: Plastic approved for use with foodstuffs, dyed blue
Surface finish	Brushed, grain 400
General color	Stainless steel
Color	Handle strips: Similar to RAL 5002
Supply includes	Housing of all-round solid construction Cut-out and reinforcement for support arm system CP 40 stainless steel Fastener with guide plate Door with sealing frame and side handle strips Lock: 3 mm double-bit
Dimensions	Width: 400 mm Height: 300 mm Depth: 150 mm

# Features

---

Protection category IP to IEC 60529	IP 66
Protection category NEMA	NEMA 12
Note	The support arm connection and door catch may be swapped over by rotating the enclosure 3 mm double-bit lock insert may be exchanged for 41 mm lock inserts, plastic handles and T handles, type C
Base material	Stainless steel 1.4301 (AISI 304)
Note on Model No.:	Compatible mounting plate 5050.430 with shipping bag 5050.507
Packaging unit	1 pc(s).
Net weight	7.125 kg
Gross weight	7.44 kg
PCF/VE (cradle-to-gate)	34.96
Customs tariff number	94032080
ETIM 9	EC002504
ECLASS 8.0	27180505
Product description	CP Command panel housing with door, WHD: 400x300x150 mm, Stainless steel 1.4301

# Approvals

---

Approvals	UL
Explanations	Declaration of conformity Declaration of conformity UK PCF-declaration