

Rittal – The System.

Faster – better – everywhere.



CP 6538.010

Command panel housing with door

State: 2026-05-21 (Source: [rittal.com/ca-en](https://www.rittal.com/ca-en))

ENCLOSURES

POWER DISTRIBUTION

CLIMATE CONTROL

IT INFRASTRUCTURE

SOFTWARE & SERVICES

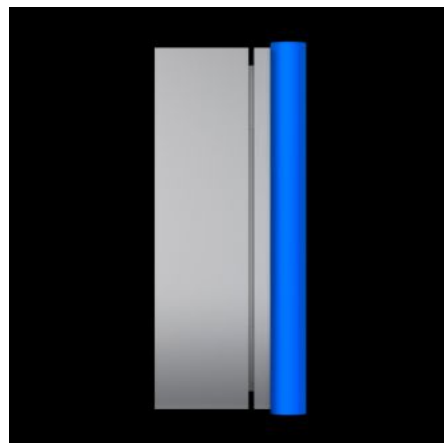
FRIEDHELM LOH GROUP



CP 6538.010 - Command panel housing with door

Stainless steel

Operating door for enclosure made from stainless steel 1.4301, (AISI 304) with handle strips made from food-grade plastic. Can be combined with CP40 support arm system, stainless steel.



Features

Model No.	CP 6538.010
Version	With support arm connection CP 40, stainless steel
Material	Housing and door: Stainless steel 1.4301 (AISI 304) Handle strips: Plastic approved for use with foodstuffs, dyed blue
Surface finish	Brushed, grain 400
General color	Stainless steel
Color	Handle strips: Similar to RAL 5002
Supply includes	Housing of all-round solid construction Cut-out and reinforcement for support arm system CP 40 stainless steel Fastener with guide plate Door with sealing frame and side handle strips Lock: 3 mm double-bit
Dimensions	Width: 400 mm Height: 400 mm Depth: 150 mm

Features

Protection category IP to IEC 60529	IP 66
Protection category NEMA	NEMA 12
Note	The support arm connection and door catch may be swapped over by rotating the enclosure 3 mm double-bit lock insert may be exchanged for 41 mm lock inserts, plastic handles and T handles, type C
Base material	Stainless steel 1.4301 (AISI 304)
Note on Model No.:	Compatible mounting plate 5050.453 with shipping bag 5050.507
Packaging unit	1 pc(s).
Net weight	8.84 kg
Gross weight	8.85 kg
Customs tariff number	94032080
ETIM 9	EC002504
ECLASS 8.0	27180505
Product description	CP Command panel housing with door, WHD: 400x400x150 mm, Stainless steel 1.4301

Approvals

Approvals	UL
Explanations	Declaration of conformity Declaration of conformity UK PCF-declaration