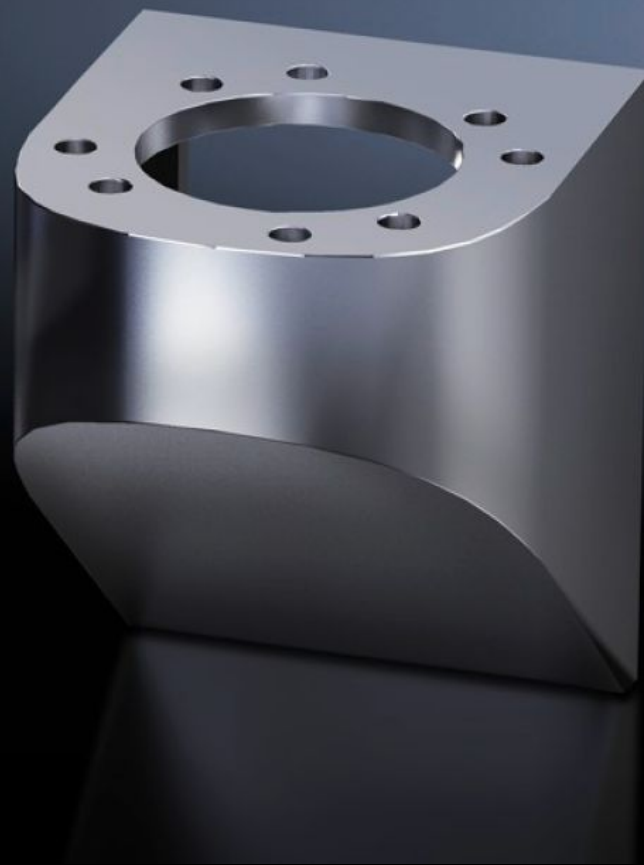


**Rittal – The System.**

Faster – better – everywhere.



**CP 6665.000**

**Wall console CP 40, stainless steel**

State: 2026-07-08 (Source: [rittal.com/ca-en](https://www.rittal.com/ca-en))

ENCLOSURES

POWER DISTRIBUTION

CLIMATE CONTROL

IT INFRASTRUCTURE

SOFTWARE & SERVICES

FRIEDHELM LOH GROUP



# CP 6665.000 - Wall console CP 40, stainless steel

## Features

Model No.	CP 6665.000
Version	Rear, M8 thread
Applications	With drill for installation of Base mounting bracket, swivel, CP 40, stainless steel (6663.500), with 4 screws Wall/base mounting bracket, rigid, CP 40, stainless steel (6663.000), with 4 screws and nuts
Material	Stainless steel 1.4301 (AISI 304)
Protection category IP to IEC 60529	IP 66 acc. to DIN EN 60529, 2014-09 IP X9 acc. to DIN EN 60529, 2014-09
Rifid y/n	Yes
Packaging unit	1 pc(s).
Net weight	1.237 kg
Gross weight	1.44 kg
Customs tariff number	83024900
ETIM 9	EC000882
ECLASS 8.0	27400556
Product description	CP Wall console CP 40, rear mounting, stainless steel, 1.4301

## Approvals

Explanations	Manufacturer's declaration
--------------	----------------------------