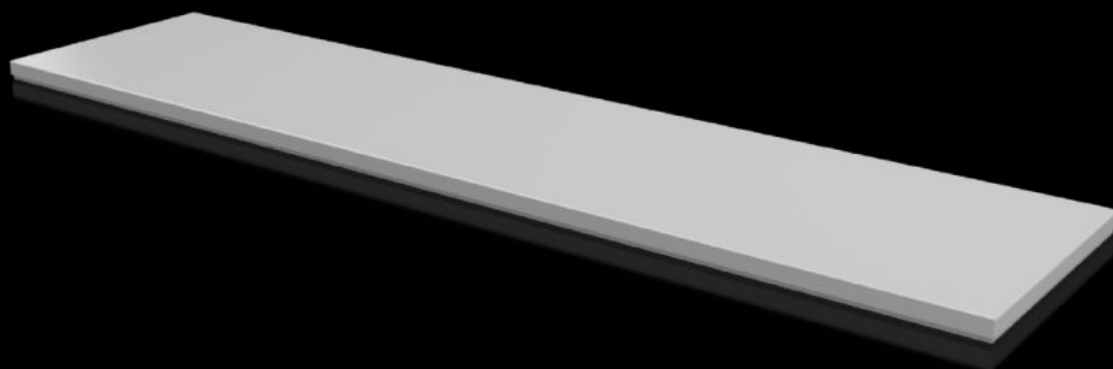


Rittal – The System.

Faster – better – everywhere.



CX 6730.930

Trim panel

State: 2025-08-29 (Source: [rittal.com/ca-en](https://www.rittal.com/ca-en))

ENCLOSURES

POWER DISTRIBUTION

CLIMATE CONTROL

IT INFRASTRUCTURE

SOFTWARE & SERVICES

FRIEDHELM LOH GROUP



CX 6730.930 - Trim panel For CX console system

For closing the roof opening of CX pedestals and desk units.

Features

Model No.	CX 6730.930
Material	Carbon steel
Surface finish	Textured paint
Color	RAL 7035
Supply includes	Assembly components
Suitable for	Enclosure type: CX Pedestal Width: = 1,600 mm Depth: = 400 mm
Protection category NEMA	NEMA 1 NEMA 12
Protection category IP to IEC 60529	IP 55
Packaging unit	1 pc(s).
Net weight	10.75
Gross weight	10.758
Customs tariff number	94039910
EAN	4028177983519
ETIM 9	EC000784
ETIM 8	EC000784
ECLASS 8.0	27180504

Approvals

Approvals

Approvals	UL + C-UL (listed)
Explanations	Declaration of conformity