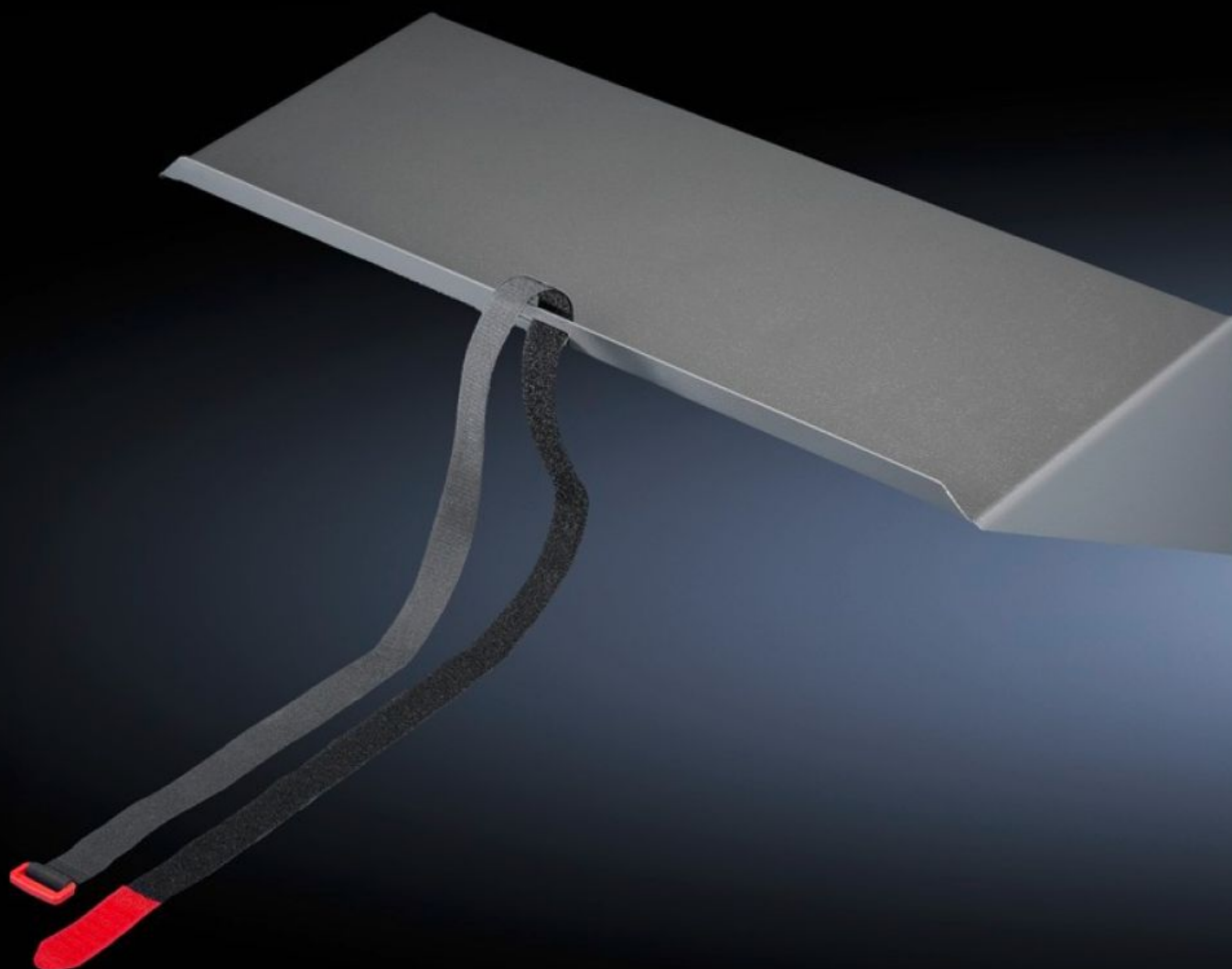


Rittal – The System.

Faster – better – everywhere.



IW 6902.950 Base

State: 2025-05-31 (Source: [rittal.com/ca-en](https://www.rittal.com/ca-en))

ENCLOSURES

POWER DISTRIBUTION

CLIMATE CONTROL

IT INFRASTRUCTURE

SOFTWARE & SERVICES

FRIEDHELM LOH GROUP



IW 6902.950 - Base for tubular door frame

The space-saving alternative instead of device shelves for holding tower PCs (max 20 kg). For screwing to the tubular door frame of 600 mm wide enclosures.

Features

Model No.	IW 6902.950
Product description	The space-saving alternative instead of device shelves for holding tower PCs (max 20 kg). For screwing to the tubular door frame of 600 mm wide enclosures.
Material	Carbon steel
Surface finish	Spray-finished
Color	RAL 7015
Supply includes	Retaining strap Fasteners Support Strip
Dimensions	Width: 445 mm Height: 159 mm Depth: 230 mm
Load capacity	20 kg
Note	The support strips included with the supply are suitable for door widths of 600 mm.
Packaging unit	1 pc(s).
Net weight	4.548
Gross weight	4.748
PCF per pack (cradle-to-gate)	16.4 kg CO2 eq (Cat B)
Note on PCF category	Category B: PCF value (cradle-to-gate) based on the product weight, approximately calculated and self-declared
Customs tariff number	94039910
EAN	4028177438729

Features

ETIM 9	EC002620
ECLASS 8.0	27189261