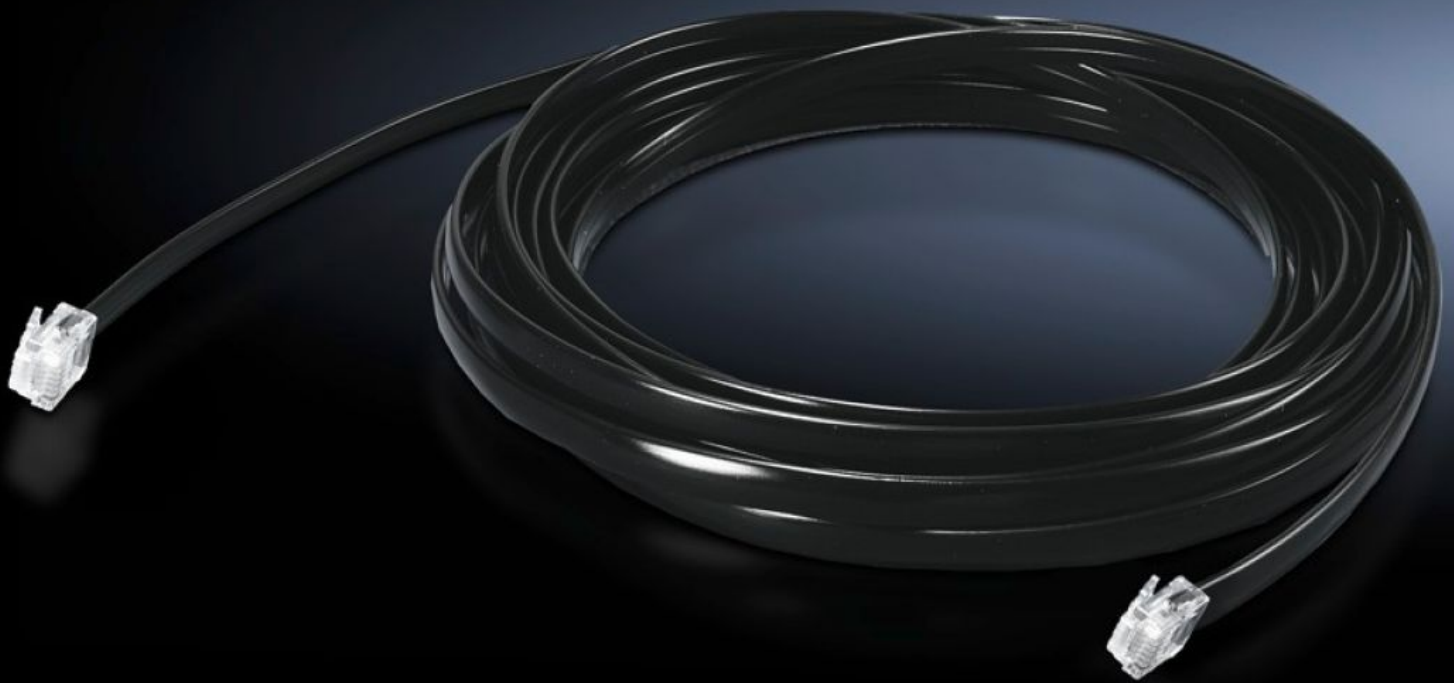


Rittal – The System.

Faster – better – everywhere.



DK 7030.095

CMC III CAN bus connection cable

State: 2025-11-02 (Source: rittal.com/ca-en)

ENCLOSURES

POWER DISTRIBUTION

CLIMATE CONTROL

IT INFRASTRUCTURE

SOFTWARE & SERVICES

FRIEDHELM LOH GROUP



DK 7030.095 - CMC III CAN bus connection cable

Connects CAN bus units to information and power distribution systems.

Features

Model No.	DK 7030.095
Product description	For cabling the PU with the CAN bus sensors III, units III, control units III as a bus, and also with each other. The different lengths allow the CMC III system to be adapted to different applications and specifically configured.
Applications	For connecting the CAN bus units. Information and power distribution systems of the individual CAN bus units.
Length	10 m
Dimensions	Length: 10 m
Interfaces/connections	Connector (type): RJ45RJ45
Operating temperature range	0 °C...55 °C
Ambient humidity (non-condensing)	5...95 %
Packaging unit	1 pc(s).
Net weight	0.37
Gross weight	0.42
Customs tariff number	85444290
EAN	4028177659469
ETIM 9	EC000313
ECLASS 8.0	27189253