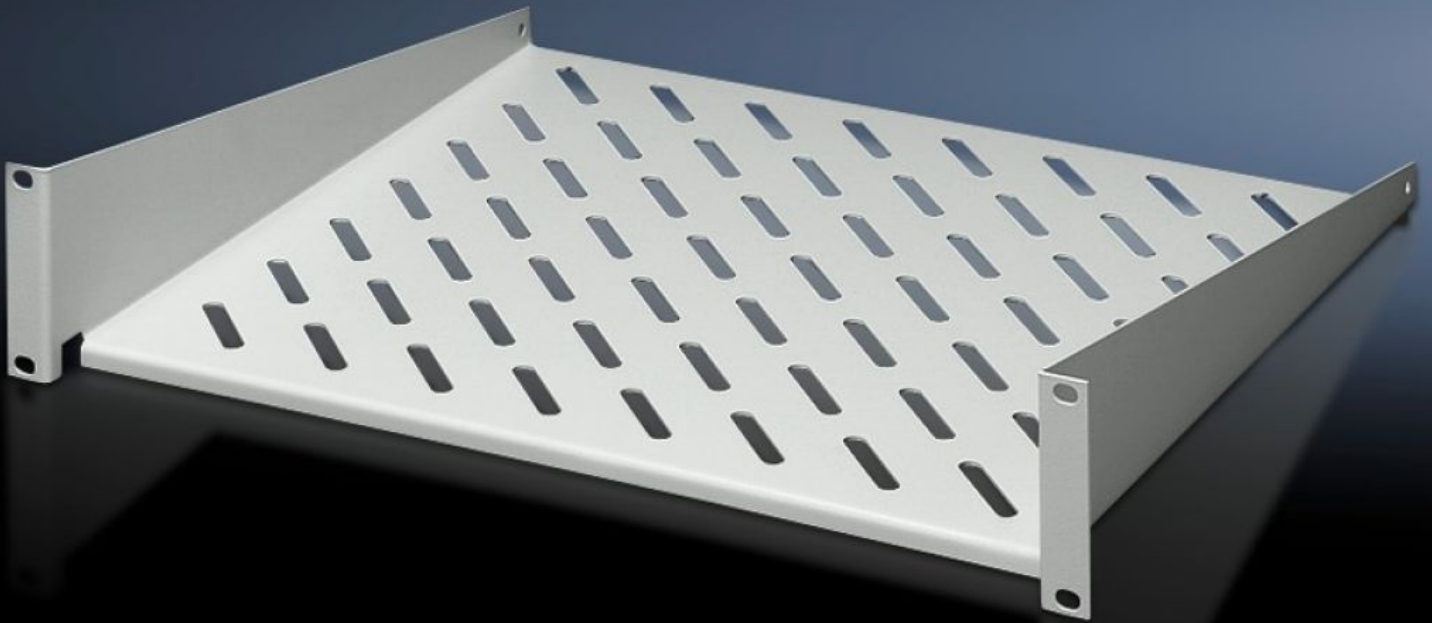


Rittal – The System.

Faster – better – everywhere.



DK 7119.250

Component Shelf 2 U, Static Installation

State: 2026-05-21 (Source: rittal.com/ca-en)

ENCLOSURES

POWER DISTRIBUTION

CLIMATE CONTROL

IT INFRASTRUCTURE

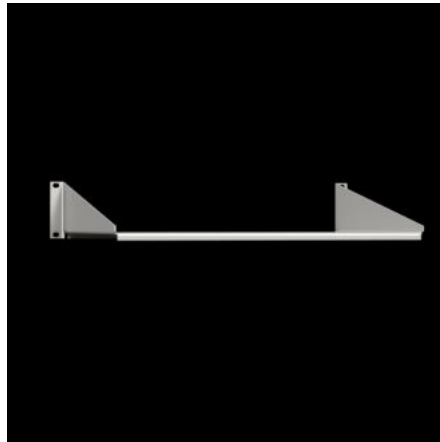
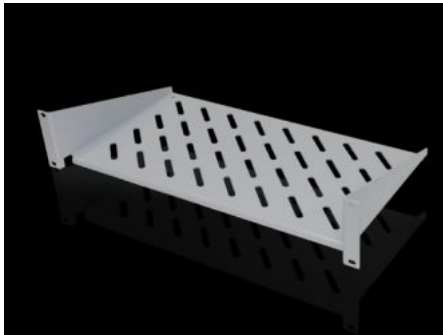
SOFTWARE & SERVICES

FRIEDHELM LOH GROUP



DK 7119.250 - Component Shelf 2 U, Static Installation

Component shelves 2 U, fixed, for attachment to 19" system punchings. Load capacity: 25 kg.



Features

Model No.	DK 7119.250
Version	19"
Product description	Mounted on vertical 482.6 mm (19") rails.
Material	Carbon steel
Surface finish	Spray-finished
Color	RAL 7035
Load capacity	25 kg surface load, static
Note	Not suitable for combination with telescopic slides.
Dimensions	Width: 482.6 mm Depth: 250 mm
Packaging unit	1 pc(s).
Net weight	1.92 kg
Gross weight	2.003 kg
PCF/VE (cradle-to-gate)	9 kg CO2 eq (Cat B)
Information regarding the PCF class	Category B: PCF value (cradle-to-gate) calculated approximately on the basis of the product weight and self-declared

Features

Customs tariff number	94039910
ETIM 9	EC002620
ECLASS 8.0	27189261
Product description	DK Component shelf, WHD: 482,6x2 Ux250 mm, 25 kg, static, distance between levels:, static installation, For 482.6 mm (19") system punchings, RAL 7035