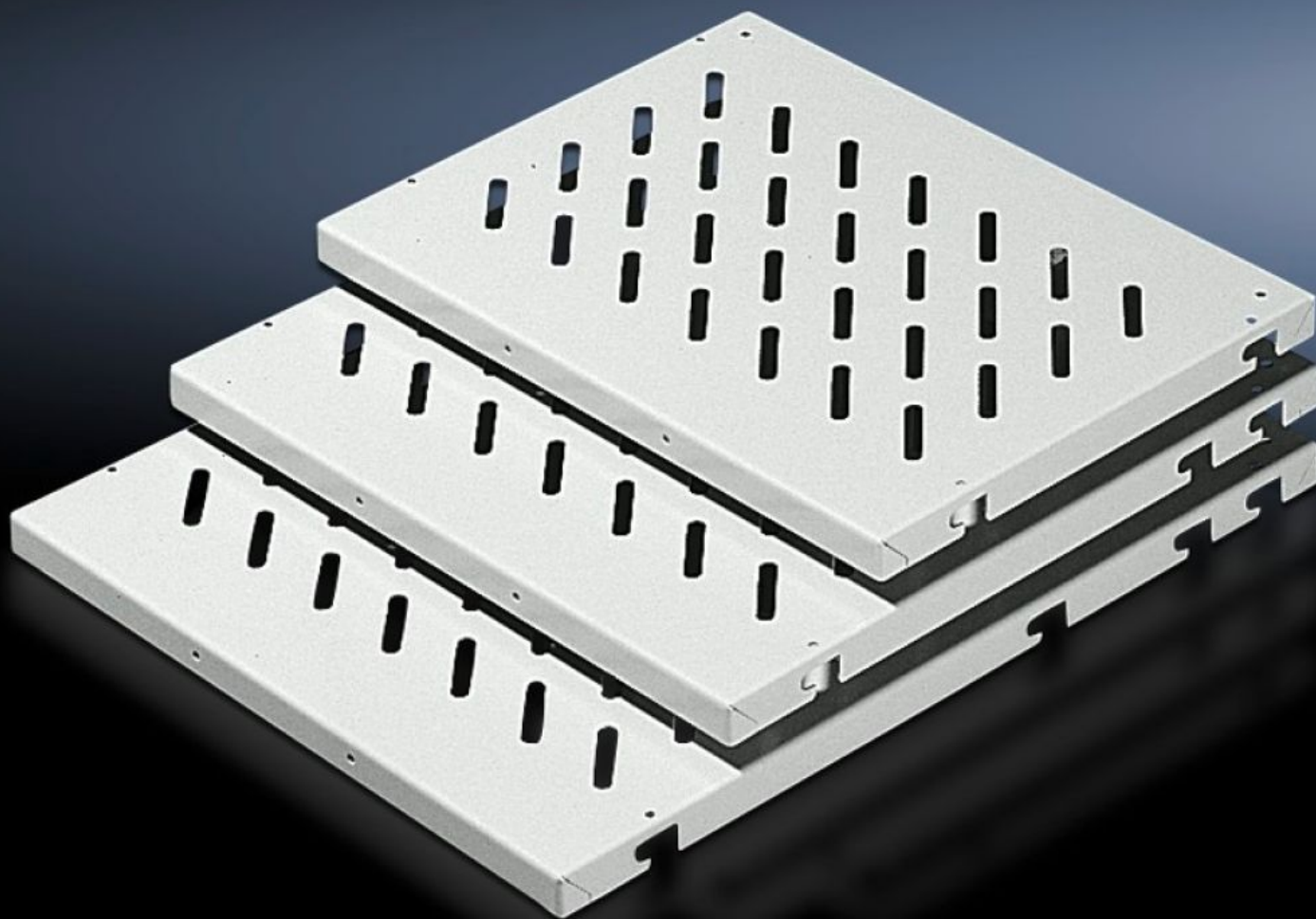


Rittal – The System.

Faster – better – everywhere.



DK 7144.035

Component Shelf, 19" Configuration

State: 2025-07-11 (Source: [rittal.com/ca-en](https://www.rittal.com/ca-en))

ENCLOSURES

POWER DISTRIBUTION

CLIMATE CONTROL

IT INFRASTRUCTURE

SOFTWARE & SERVICES

FRIEDHELM LOH GROUP



DK 7144.035 - Component Shelf, 19" Configuration

Enclosure with L-profile rails front and rear

Provides more location points, making the distance between the 19" levels variable, can be upgraded to enable full withdrawal with telescopic rails, load capacity: 50 kg.

Features

Model No.	DK 7144.035
Product description	Depending on its depth the component shelf provides several location points, making the distance between the 19" levels variable within certain limits. Each component shelf mounted in this way can be upgraded using telescopic rails to allow full withdrawal. In this case, the telescopic rails are screw-fastened at the site of the spacer bolts.
Applications	For mounting on two 19" profile rails To retrofit TS frame enclosures
Material	Carbon steel
Color	RAL 7035
Supply includes	Assembly components
Distance between mounting levels	348 mm 398 mm
Load capacity	50 kg surface load
Note	For TS: If L rails based on TS network enclosures are used, adapter 7827.300 is required For TS, 19" system punchings: The depth-variable installation kit 7063.850 allows flexible mounting between two L rails directly on the 19" system punchings.
Dimensions	Width: 409 mm Depth: 400 mm
Packaging unit	1 pc(s).
Net weight	2.19
Gross weight	2.39

Features

Customs tariff number	94039910
EAN	4028177165694
ETIM 9	EC002620
ECLASS 8.0	27189261