

Rittal – The System.

Faster – better – everywhere.



DK 7151.035

Blanking panel, 19" (482.6 mm)

State: 2025-09-08 (Source: [rittal.com/ca-en](https://www.rittal.com/ca-en))

ENCLOSURES

POWER DISTRIBUTION

CLIMATE CONTROL

IT INFRASTRUCTURE

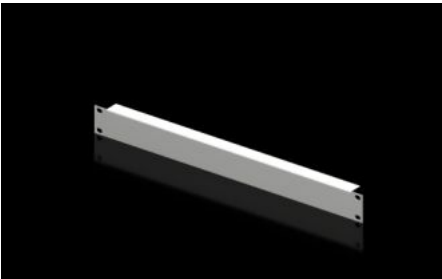
SOFTWARE & SERVICES

FRIEDHELM LOH GROUP



DK 7151.035 - Blanking panel, 19" (482.6 mm)

As a reserve panel cover or for population as required.



Features

Model No.	DK 7151.035
Product description	As a reserve panel cover.
Material	Carbon steel
Color	RAL 7035
Build-up height	44 mm
Dimensions	Width: 482.6 mm
Height units	1 U
Packaging unit	2 pc(s).
Net weight	0.568
Gross weight	0.664
PCF/VE (cradle-to-gate)	2.5 kg CO2 eq (Cat B)
Information regarding the PCF class	Category B: PCF value (cradle-to-gate) calculated approximately on the basis of the product weight and self-declared
Customs tariff number	94039910
EAN	4028177165748
ETIM 9	EC000456
ECLASS 8.0	27189217