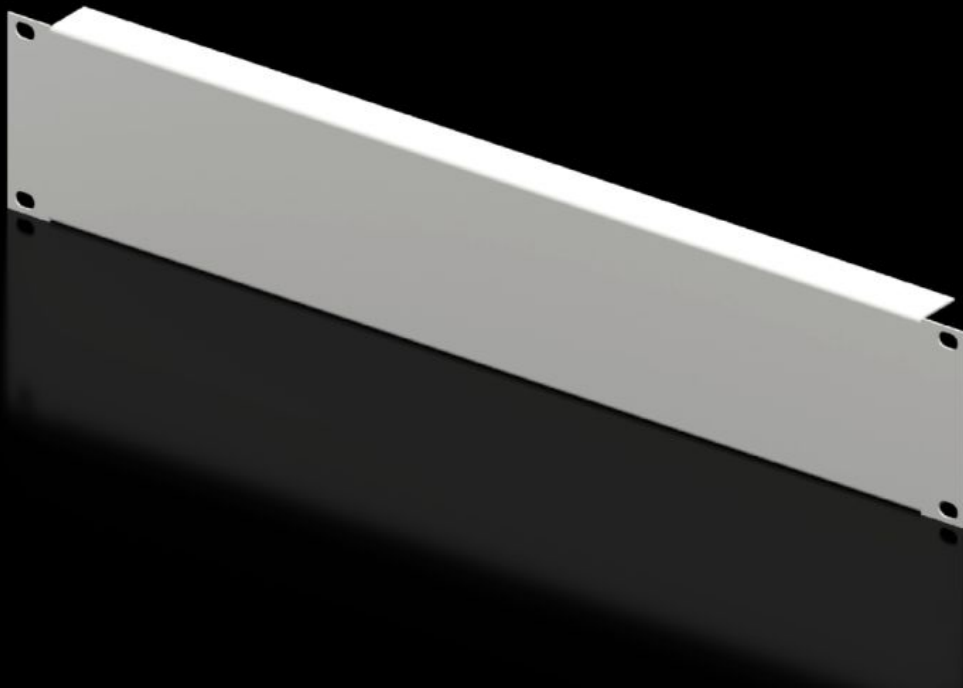


Rittal – The System.

Faster – better – everywhere.



DK 7152.035

Blanking panel, 19" (482.6 mm)

State: 2026-05-22 (Source: [rittal.com/ca-en](https://www.rittal.com/ca-en))

ENCLOSURES

POWER DISTRIBUTION

CLIMATE CONTROL

IT INFRASTRUCTURE

SOFTWARE & SERVICES

FRIEDHELM LOH GROUP



DK 7152.035 - Blanking panel, 19" (482.6 mm)

As a reserve panel cover or for population as required.



Features

Model No.	DK 7152.035
Product description	As a reserve panel cover.
Material	Carbon steel
Color	RAL 7035
Build-up height	88 mm
Dimensions	Width: 482.6 mm
Height units	2 U
Packaging unit	2 pc(s).
Net weight	1.224 kg
Gross weight	1.312 kg
PCF/VE (cradle-to-gate)	5 kg CO2 eq (Cat B)
Information regarding the PCF class	Category B: PCF value (cradle-to-gate) calculated approximately on the basis of the product weight and self-declared
Customs tariff number	94039910
ETIM 9	EC000456
ECLASS 8.0	27189217
Product description	DK Blanking panel, 482.6 mm (19"), 2 U, Installation height: 88 mm, RAL 7035