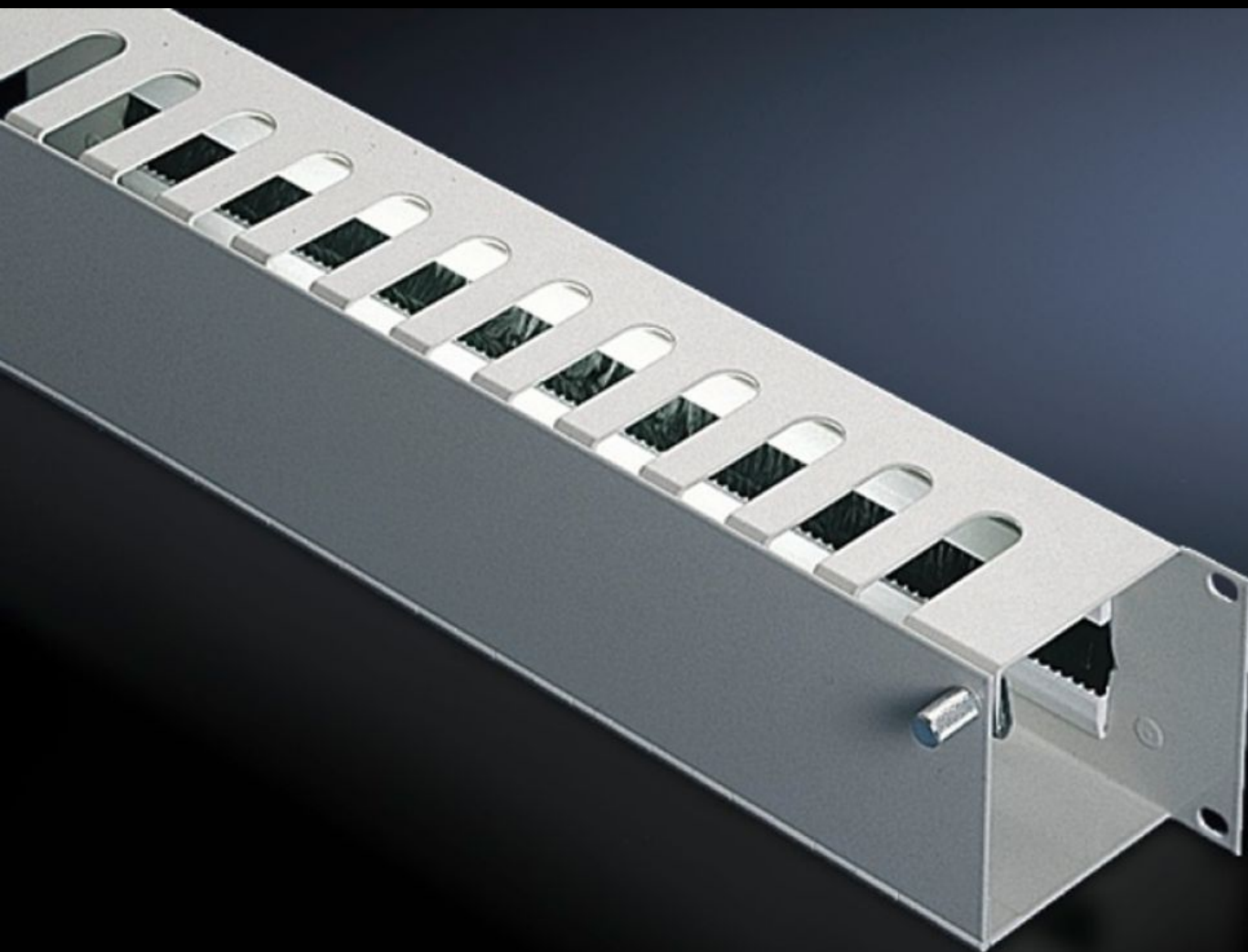
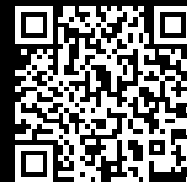


**Rittal – The System.**

Faster – better – everywhere.



# DK 7158.035

## Cable management panel

State: 2025-07-14 (Source: [rittal.com/ca-en](https://www.rittal.com/ca-en))

ENCLOSURES

POWER DISTRIBUTION

CLIMATE CONTROL

IT INFRASTRUCTURE

SOFTWARE & SERVICES

FRIEDHELM LOH GROUP



# DK 7158.035 - Cable management panel with front flap

Cable routing compartment with cut-outs at the top, with flap and quick-release fasteners at the front for easy access, cables are fed in from the rear through the cut-out with brush strips.

## Features

Model No.	DK 7158.035
Product description	The cable routing compartment is provided with cut-outs at the top, and the patch cables can be inserted here. The cable management panel is fitted with a flap and quick-release fasteners at the front, for optimum cable access. Cables can be fed in from the rear through the cut-out with brush strips.
Material	Carbon steel
Surface finish	Spray-finished
Color	RAL 7035
Depth of bars	55 mm
Dimensions	Width: 482.6 mm
Height units	2 U
Packaging unit	1 pc(s).
Net weight	1.684
Gross weight	1.746
Customs tariff number	94039910
EAN	4028177166684
ETIM 9	EC000322
ECLASS 8.0	27400604