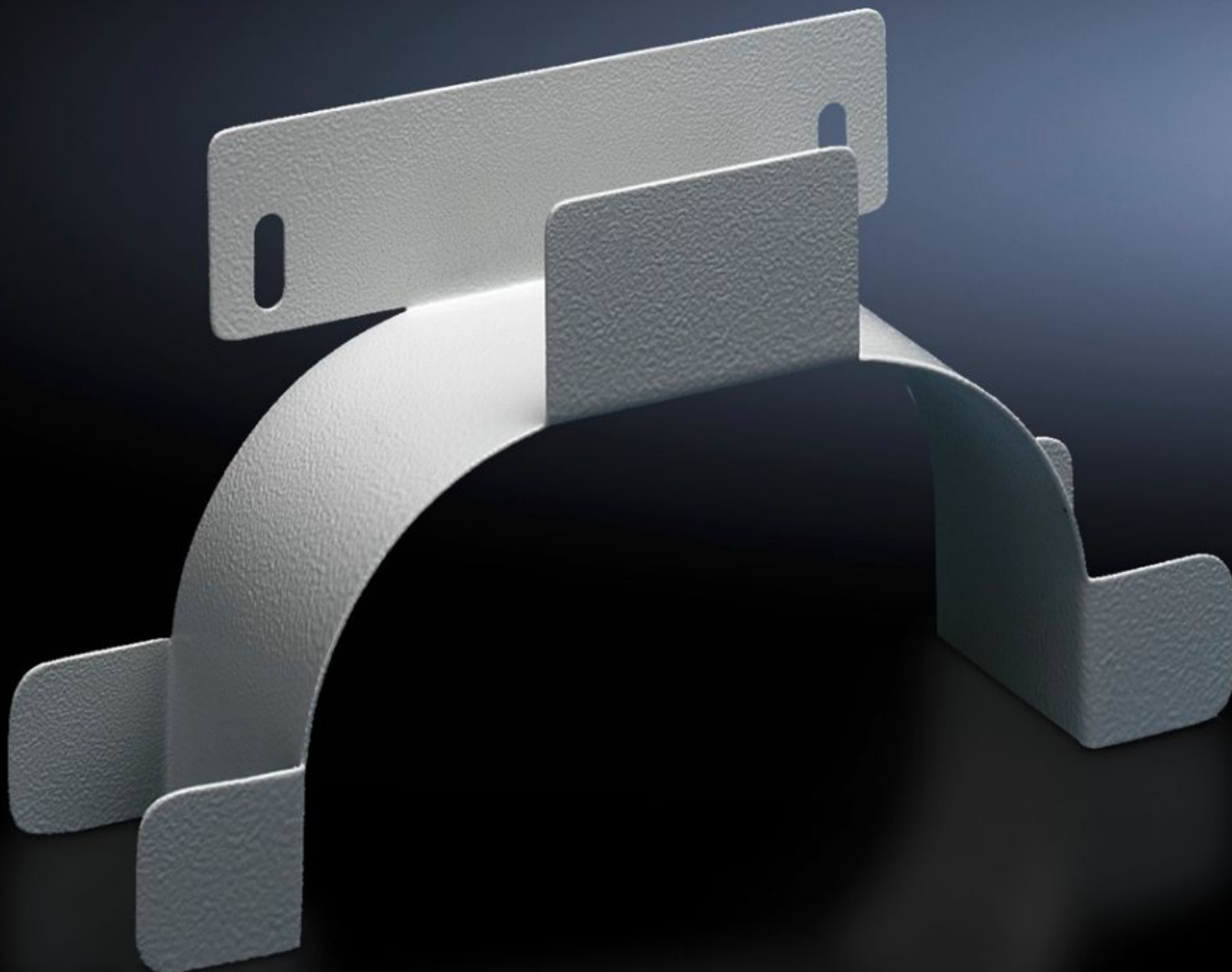
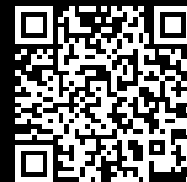


**Rittal – The System.**

Faster – better – everywhere.



# DK 7220.500

## Surplus Cable Holder

State: 2025-06-06 (Source: [rittal.com/ca-en](https://www.rittal.com/ca-en))

ENCLOSURES

POWER DISTRIBUTION

CLIMATE CONTROL

IT INFRASTRUCTURE

SOFTWARE & SERVICES

FRIEDHELM LOH GROUP



# DK 7220.500 - Surplus Cable Holder

Fastened at the rear area of the enclosure, or at the side of network enclosures.



## Features

Model No.	DK 7220.500
Product description	Fastened at the rear of the enclosure, or on the side of network enclosures. The surplus cable holder can be attached to all depth stays or to chassis and rails with a 25 mm hole pattern, mounting dimensions 150 mm.
Material	Carbon steel
Surface finish	Zinc-plated
Color	RAL 7035
Dimensions	Width: 280 mm Height: 151 mm Depth: 75 mm
Packaging unit	1 pc(s).
Net weight	0.56
Gross weight	0.66
PCF per pack (cradle-to-gate)	3.3 kg CO2 eq (Cat B)
Note on PCF category	Category B: PCF value (cradle-to-gate) based on the product weight, approximately calculated and self-declared
Customs tariff number	73269098

# Features

EAN	4028177221659
ETIM 9	EC000322
ECLASS 8.0	27400604