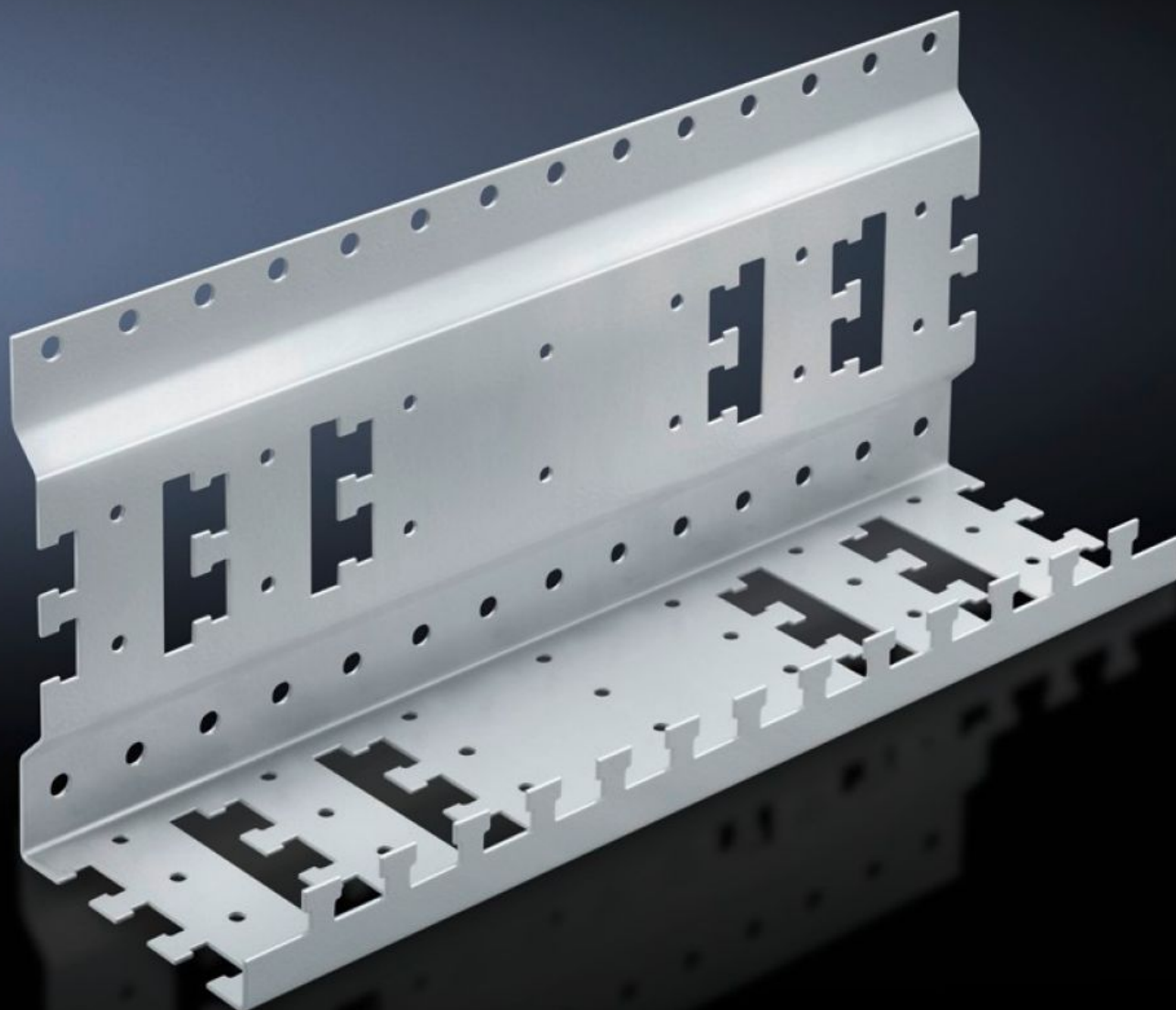


# Rittal – The System.

Faster – better – everywhere.



## DK 7246.500

## Support

State: 2025-12-13 (Source: [rittal.com/ca-en](https://www.rittal.com/ca-en))

ENCLOSURES

POWER DISTRIBUTION

CLIMATE CONTROL

IT INFRASTRUCTURE

SOFTWARE & SERVICES

FRIEDHELM LOH GROUP



# DK 7246.500 - Support for small appliances

Angle-shaped support to securely mount non-19" conforming small appliances.



## Features

Model No.	DK 7246.500
Product description	To securely mount non-19" small appliances such as modems, power packs, routers, etc. Angle-shaped support is mounted in the free space at the side between the 482.6 mm (19") level and the side panel on profile rails or chassis. It is quick and easy to attach components and connection cables using Velcro fasteners or cable ties. Also suitable for cable routing in the enclosure depth.
Material	Carbon steel
Surface finish	Zinc-plated
Supply includes	Assembly components
Dimensions	Width: 350 mm Height: 150 mm Depth: 97 mm
Packaging unit	1 pc(s).
Net weight	1.05
Gross weight	1.167
PCF/VE (cradle-to-gate)	4.7 kg CO2 eq (Cat B)
Information regarding the PCF class	Category B: PCF value (cradle-to-gate) calculated approximately on the basis of the product weight and self-declared
Customs tariff number	73269098

# Features

EAN	4028177625464
ETIM 9	EC002620
ECLASS 8.0	27189261