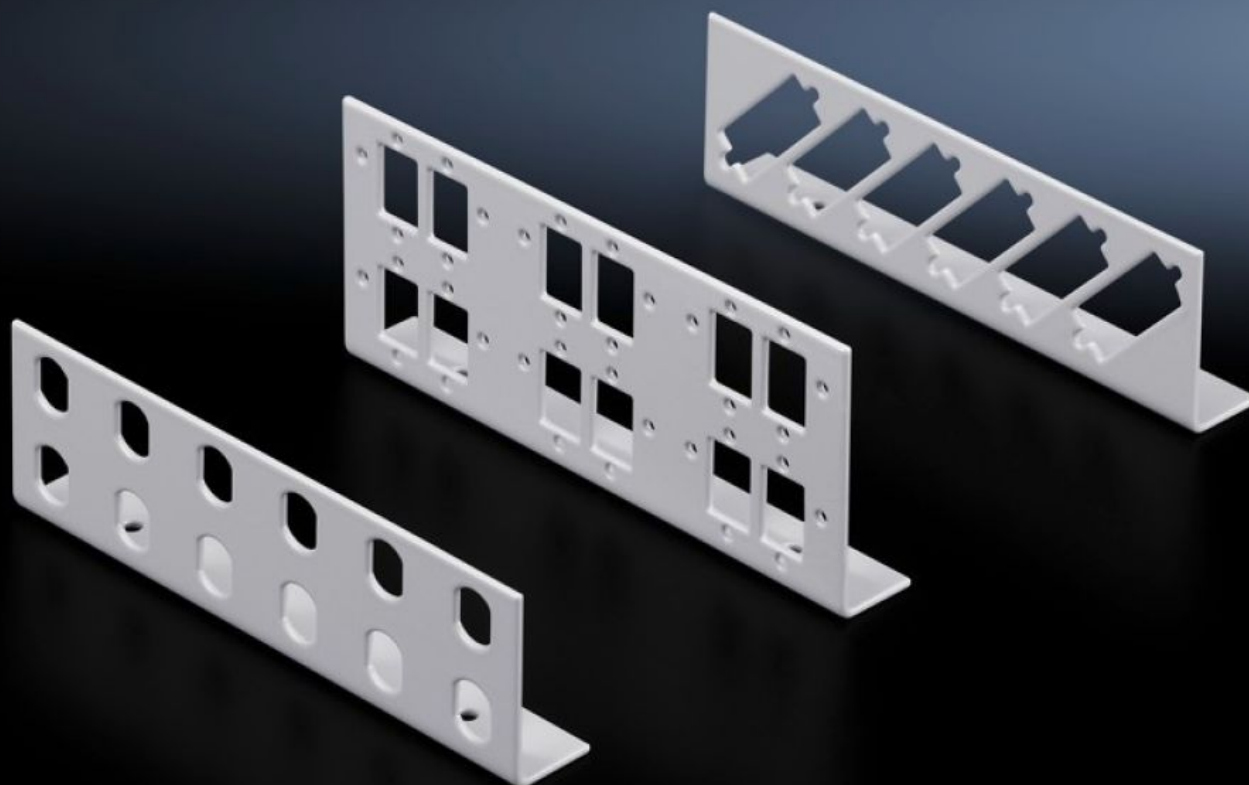
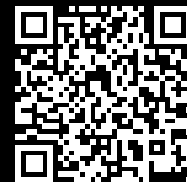


Rittal – The System.

Faster – better – everywhere.



DK 7463.200

Patch panels for small fibre-optic distributors

State: 2025-08-26 (Source: rittal.com/ca-en)

ENCLOSURES

POWER DISTRIBUTION

CLIMATE CONTROL

IT INFRASTRUCTURE

SOFTWARE & SERVICES

FRIEDHELM LOH GROUP



DK 7463.200 - Patch panels for small fibre-optic distributors

Patch panel for small fiber optic distributors for ST, SC, E-2000 and E-2000 duplex couplings.

Features

Model No.	DK 7463.200
Product description	Various patch panels with different connector types are available for individual configuration of small fiber-optic distributors.
Material	Carbon steel
Color	RAL 7035
Supply includes	Patch panel Assembly components
Number of patch panels per enclosure (max.)	2
Base material	Carbon steel
for fiber-optic coupling	SC duplex
Number of locations	Duplex: 6
Packaging unit	2 pc(s).
Net weight	0.09
Gross weight	0.148
PCF/VE (cradle-to-gate)	0.6 kg CO2 eq (Cat B)
Information regarding the PCF class	Category B: PCF value (cradle-to-gate) calculated approximately on the basis of the product weight and self-declared
Customs tariff number	94039910
EAN	4028177187160
ETIM 9	EC001130
ECLASS 8.0	19170113