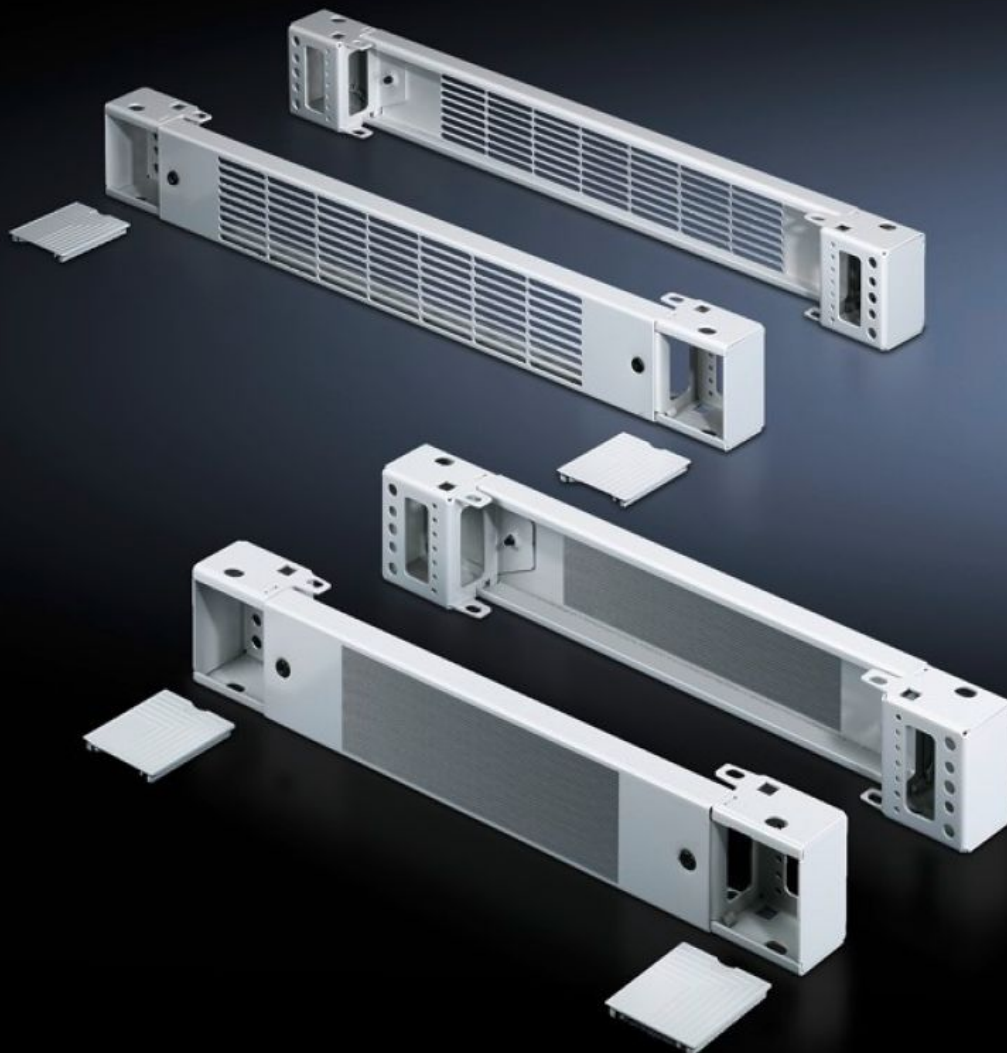


Rittal – The System.

Faster – better – everywhere.



TS 7825.801

Base/plinth components, front and rear, 100 mm

State: 2026-02-06 (Source: [rittal.com/ca-en](https://www.rittal.com/ca-en))

ENCLOSURES

POWER DISTRIBUTION

CLIMATE CONTROL

IT INFRASTRUCTURE

SOFTWARE & SERVICES

FRIEDHELM LOH GROUP



TS 7825.801 - Base/plinth components, front and rear, 100 mm Carbon steel, for TS, TS IT, SE, CM, TP, PC, IW, TE

Base/Plinth component consisting of one trim panel and two pre-assembled corner pieces.

Features

Model No.	TS 7825.801
Version	Vented
Product description	Base/Plinth component consisting of one trim panel and two pre-assembled corner pieces.
Material	Base/plinth components: Carbon steel Cover caps: Plastic
Surface finish	Spray-finished
Color	RAL 7035 Cover caps: RAL 7035
Supply includes	2 base/plinth components 4 cover caps Assembly components
Dimensions	Height: 100 mm
Suitable for	Enclosure type: TS: = 800 mm Enclosure type: SE Enclosure type: CM Enclosure type: TP Enclosure type: PC Enclosure type: IW Enclosure type: TS IT
Packaging unit	2 pc(s).
Net weight	3.9
Gross weight	4.337
Customs tariff number	94039910
EAN	4028177234406

Features

E-Number Sweden	E7239724
ECLASS 8.0	27182003